



SPARE PARTS LIST

Gas (Builtin hobs, with controls)

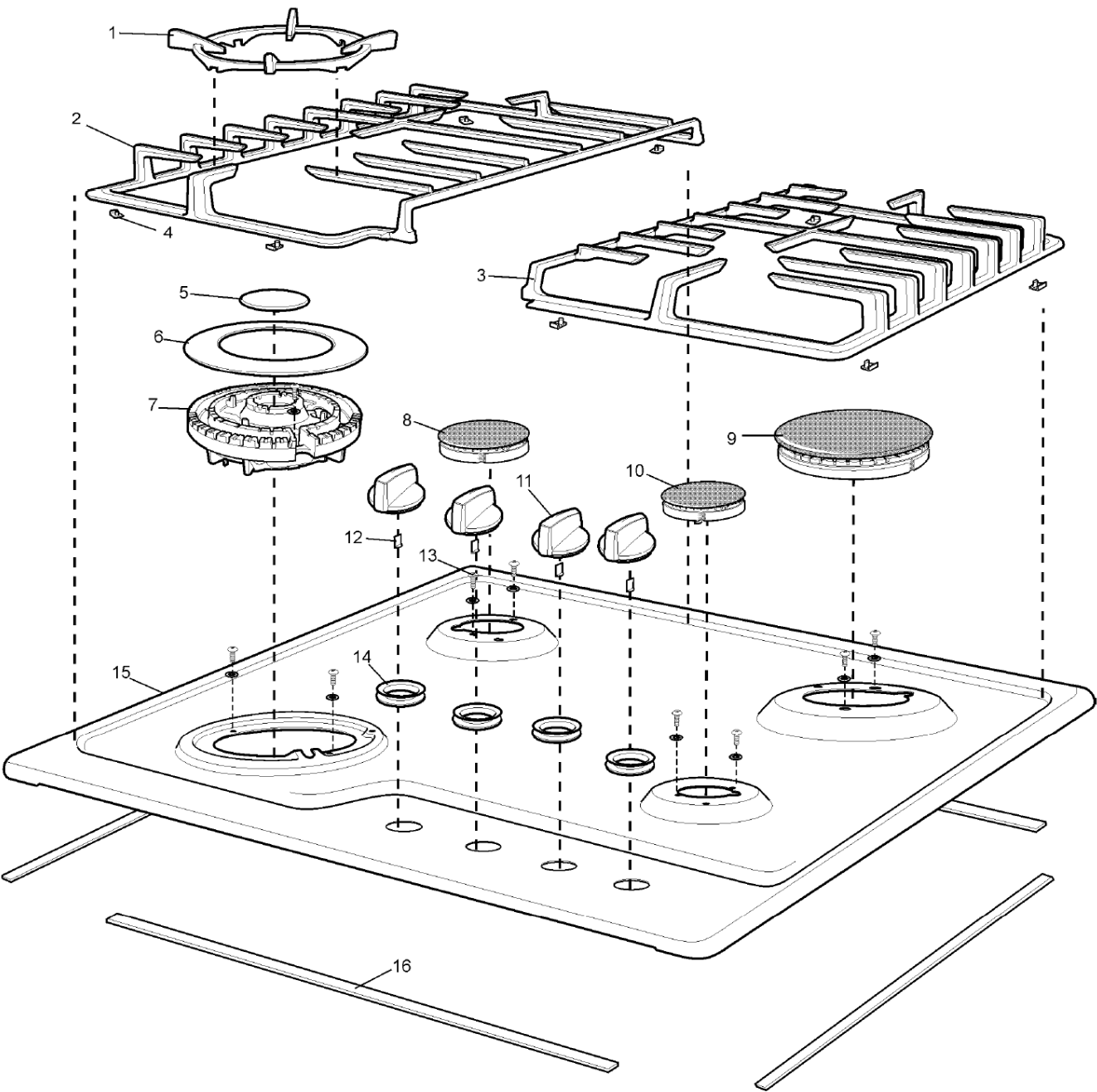
2252

Item	PNC	ELC	Brand	Model	Market
A	943253583	00	Westinghouse	GHP765S	IDN

		Gas (Builtin hobs, with controls)	
Electrolux Thailand Co.,Ltd. 1910 Electrolux Building New Petchburi Rd. Bangkapi Huaykwang Bangkok , 10310 Tel : +662 725 9000		Publication-No. 111110	

Model : GHP765S  
PNC : 943253583

Ex. View Drawing  
HOB ASSEMBLY

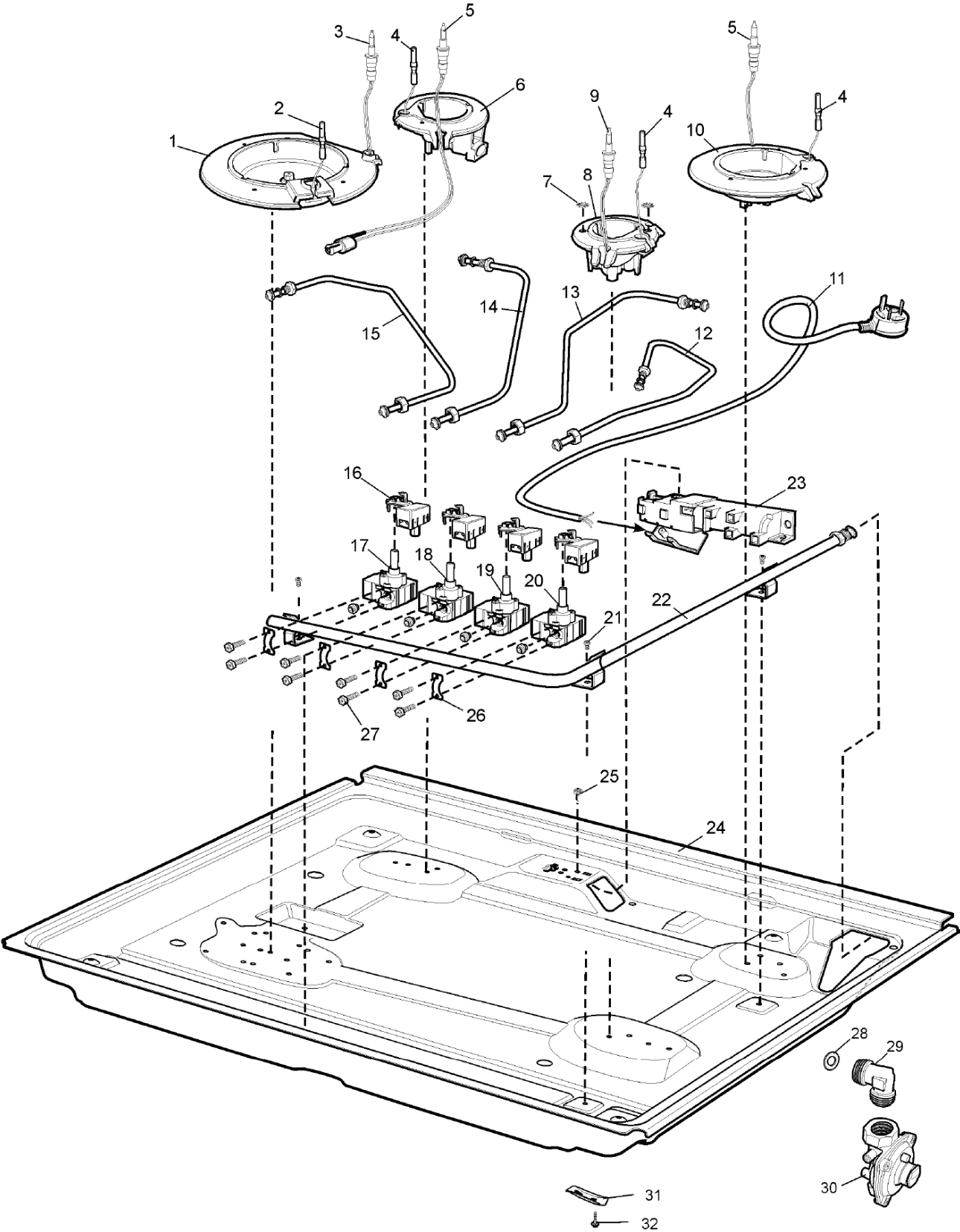


Item	PNC	ELC	Brand	Model	Market
A	943253583	00	Westinghouse	GHP765S	IDN

Pos.	Part No.	Description
1	305 4398 00	TRIVET WOK CROWN CAST
2	305 4305 00	TRIVET CAST L/H 60 W/HOUSE (INC ITEM 4)
3	305 4306 00	TRIVET CAST R/H 60 W/HOUSE (INC ITEM 4)
4	0523 001 031	TRIVET FOOT (PT OF ITEM 3)
5	305 4316 00	BURNER CAP MATT INNER WOK
6	305 4317 00	BURNER CAP MATT OUTER WOK
7	357 7259 05	TRIPLE CROWN WOK BNR CYL MACH
8	305 3818 00	BURNER CROWN/CAP S/R MATT CYL
9	305 3819 00	BURNER CROWN/CAP RAP MATT CYL
10	305 3817 00	BURNER CROWN/CAP AUX MATT CYL
11	305 3821 02	KNOB S/S WESTINGHOUSE GAS CT (INC ITEM 12)
12	342 0168 01	CLIP KNOB SPRING (PT OF ITEM 11)
13	354 3202 01	SCREW 2.9 X 13 PAN T10 ZP PTFE
14	355 6112 01	GROMMET HOB - NFR
15	305 4376 00	HOB S/STEEL W/H 60 SCREEN FSG
16	356 5189 03	SEAL MASTIC - 550MM (4 X PER PACK)
N.I.	305 4502 00	CLIP ARROW IGNITE BLACK

Model : GHP765S  
PNC : 943253583

Ex. View Drawing  
BURNER BOX ASSEMBLY



Item	PNC	ELC	Brand	Model	Market
A	943253583	00	Westinghouse	GHP765S	IDN

Pos.	Part No.	Description
1	0004 008 445	BURNER BODY ASSY WOK IGN NG
2	357 0406 08	PLUG SPARK WOK 500MM ENAMELLED
3	357 0564 02	T'COUPLE TT ELUX BRNR WOK 500
4	357 0448 17	PLUG SPARK 400 MM ENAMELLED
5	357 0563 02	T'COUPLE TT ELUX BURNER 500
6	357 7298 48	BURNER BODY ASSY S/RAP IGN NG
7	*354 3212 09	WASHER S/P EXTERNAL 4.3 X 8 ZP
8	305 4501 00	BURNER BODY ASSY AUX IGN NG
9	357 0563 01	T'COUPLE TT ELUX BURNER 275
10	357 7298 42	BURNER BODY ASSY RAPID IGN NG
11	305 4292 00	CABLE - ELECT SUPPLY IGNITE
12	305 4296 00	TUBE BURNER 60 IGNITE FSG RF
13	305 4295 00	TUBE BURNER 60 IGNITE FSG RR
14	305 4294 00	TUBE BURNER 60 IGNITE FSG LR
15	305 4293 00	TUBE BURNER 60 IGNITE FSG LF
16	°305 4426 00	SWITCH HARNESS 4P BSI IGNITE
17	305 4486 03	VALVE GAS BSI FSG WOK BLACK
18	305 4486 01	VALVE GAS BSI FSG SEMI RAP BL
19	305 4486 02	VALVE GAS BSI FSG RAPID RED
20	305 4486 00	VALVE GAS BSI FSG AUX GREEN
21	354 3242 02	SCREW SPIRAL 4 X 6 PAN T10 ZP
22	305 3808 00	RAIL GAS 60/75 IGNITE
23	357 2092 01	IGN & TERM BOX 4P - 240V ISPRA
24	305 3800 00	BURNER BOX 60 IGNITE
25	*354 3201 05	SCREW M4 X 6 HEX T20 ZP
26	305 4291 00	CLAMP GAS VALVE BSI FSG
27	0750 003 026	SCREW M4 X 16 HEX ZC
28	0115 009 011	WASHER SEALING (PT OF ITEM 31)
29	305 4580 00	ELBOW GAS INLET 1/2" MALE/MALE
30	0294 001 032	REGULATOR GAS NG INTEG TEST PT
31	353 0284 01	CLAMP BURNER BOX IGNITE
32	46667	SCREW #8 X 3/4" PAN Z/P (PT OF ITEM 31)

N.I. 305 4425 00 KIT ASSY CLAMPS & INLET 60/75  
(INC ITEMS 28, 29, 31 & 32)

N.I. 0125 008 356 CLIP SPARK PLUG ELU/X

**NOTE** \* ITEMS 7 & 25 MUST BE FITTED PROVIDES AN EARTH

**NOTE** ° LOCTITE HAS BEEN USED TO ENSURE IGNITION SWITCHES

**REMAIN** CORRECTLY SEATED DURING TRANSIT. WHEN RE-FITTING SWITCHES  
LOCTITE IS NOT REQUIRED.

Item	PNC	ELC	Brand	Model	Market
A	943253583	00	Westinghouse	GHP765S	IDN

## Gas Conversion – Important

**NOTE:** THIS KIT MUST BE FITTED BY A LICENSED GAS FITTER.  
A CERTIFICATE OF COMPLIANCE MUST BE SUPPLIED TO BE KEPT BY THE CUSTOMER.

Please follow the procedure below if a conversion to LPG or NG is required.

1. Remove the hotplate burners to access the hotplate injectors.
2. Replace the injectors with the appropriate injectors. (see table below).
3. Unscrew the hex nut from the regulator. The hex nut, brass washer and nylon insert will disengage from the regulator as an assembly.
4. Unclip the nylon insert from the nut assembly by rotating the insert 1/4 turn and pulling it free. (Figure 2)
5. Correctly orientate the insert and clip back into position. (Figure 3)
6. Refit the hex nut assembly to the regulator ensuring that it is fully screwed down.
7. Turn on the gas supply and at each new connection, check for leaks using soapy water.

8. The operation of the regulator can be confirmed by connecting a manometer to the pressure test point located on the side of the regulator body. (Fig 1) With the appliance operating check the outlet pressure. (see table below)

- When all burners of the appliance are operating at maximum,
  - When the smallest burner of the appliance is operating at minimum.
9. One by one, turn the knobs to minimum and adjust the bypass screw (accessible when the knob is removed) until a small stable flame results. Turn the knob to maximum and then back to minimum to ensure that the correct minimum flame is maintained.
10. Attach the correct sticker to the cooker, near the gas supply inlet. (Remove or cover the old sticker)

Burner Type	Natural Gas (Nominal test point pressure: 1.00kPa)	LPG (Nominal test point pressure: 2.60kPa)
Small	1.00	0.55
Medium	1.35	0.70
Fish	1.45	0.78
Large	1.60	0.90
Wok	1.75	1.00

Fig 1

Hex nut assembly fully screwed down.

Pressure Test Point.

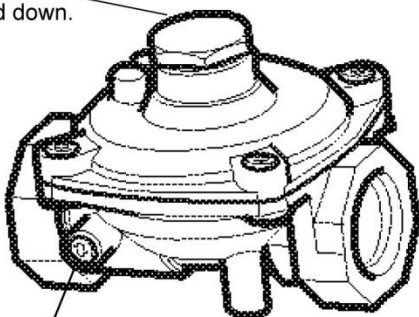


Fig 2

Hex nut assembly removed from regulator and insert disassembled.

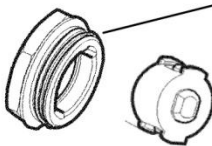
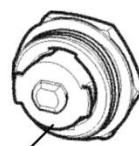
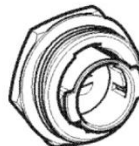


Fig 3

Insert orientated for natural gas operation.

Insert orientated for LPG operation.



Item	PNC	ELC	Brand	Model	Market
A	943253583	00	Westinghouse	GHP765S	IDN

**Part No.**

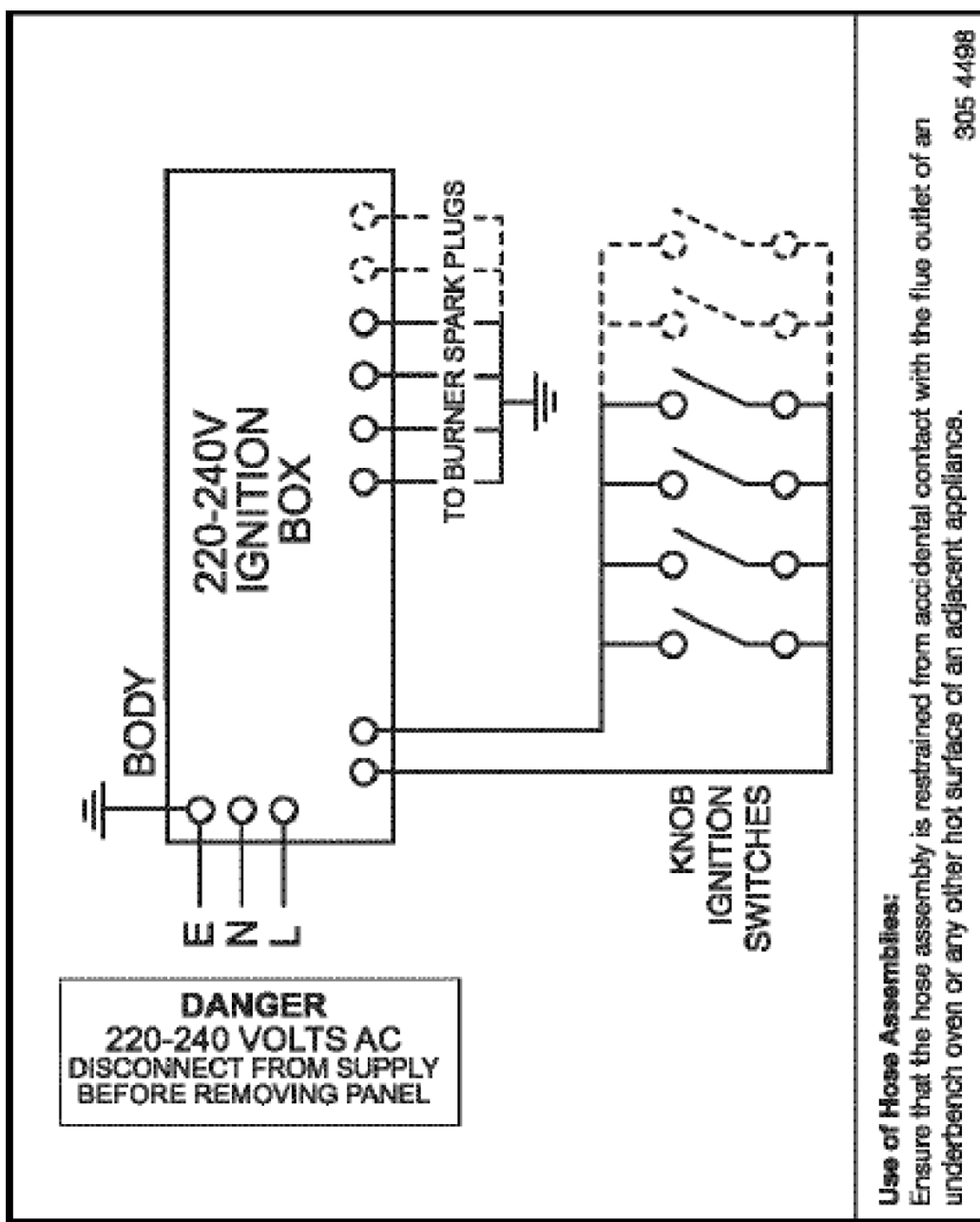
**Description**

<b>0131 002 100</b>	NIPPLE INJECTOR LP/NG 1.0 MM
<b>0131 002 135</b>	NIPPLE INJECTOR SEMI R NG 1.35 MM
<b>0131 001 198</b>	NIPPLE INJECTOR FISH NG 1.45 MM
<b>0131 002 393</b>	NIPPLE INJECTOR RAPID NG 1.60 MM
<b>0131 002 403</b>	NIPPLE INJECTOR WOK NG 1.75 MM
<b>0131 001 148</b>	NIPPLE INJECTOR AUX LP 0.55 MM
<b>0131 001 149</b>	NIPPLE INJECTOR SEMI R LP 0.70 MM
<b>0131 002 078</b>	NIPPLE INJECTOR FISH LP 0.78 MM
<b>0131 001 199</b>	NIPPLE INJECTOR RAPID LP 0.90 MM
<b>0296 004 103</b>	STICKER GAS TYPE LPG
<b>0296 004 100</b>	STICKER GAS TYPE NG
<b>ES6012</b>	INSTRUCTION SHEET

**NOTE THIS KIT SUITS LP OR NG CONVERSION**

Model : GHP765S  
PNC : 943253583

## CIRCUIT DIAGRAM



### WARNING

IT IS ILLEGAL FOR PERSONS OTHER THAN LICENSED ELECTRICAL MECHANICS OR PERSONS AUTHORISED BY LEGISLATION TO WORK ON THE FIXED WIRING OF ANY ELECTRICAL INSTALLATION. PENALTIES FOR CONVICTION ARE SEVERE.

### IMPORTANT SAFETY NOTICE

This diagram has been prepared for use by electrically qualified service technicians. Electrolux cannot be held responsible for the interpretation of its service publications nor for any injury or damage that may occur in connection with their use.