

Electrolux

ELECTROLUX HOME PRODUCTS PTY LTD

ABN 51 004 762 341

Technical Publication Nº CG1106

Issue: 1

Date: 10/18

WESTINGHOUSE

GAS COOKTOPS

MODEL:

WHG640SB

PNC 94325400705

WHG640WB

PNC 94325400605

Maintenance Level Change Summary	
05	Valves and ignition switch harness

First Built Dates:	
WHG640WB	11/18
WHG640WB	11/18

CONTENTS	PAGE Nº
FIRST BUILT DATES	2
CONTENTS	3
COOKTOP ASSEMBLY	4 - 5
GAS CONVERSION & KIT	6
CIRCUIT DIAGRAM	7

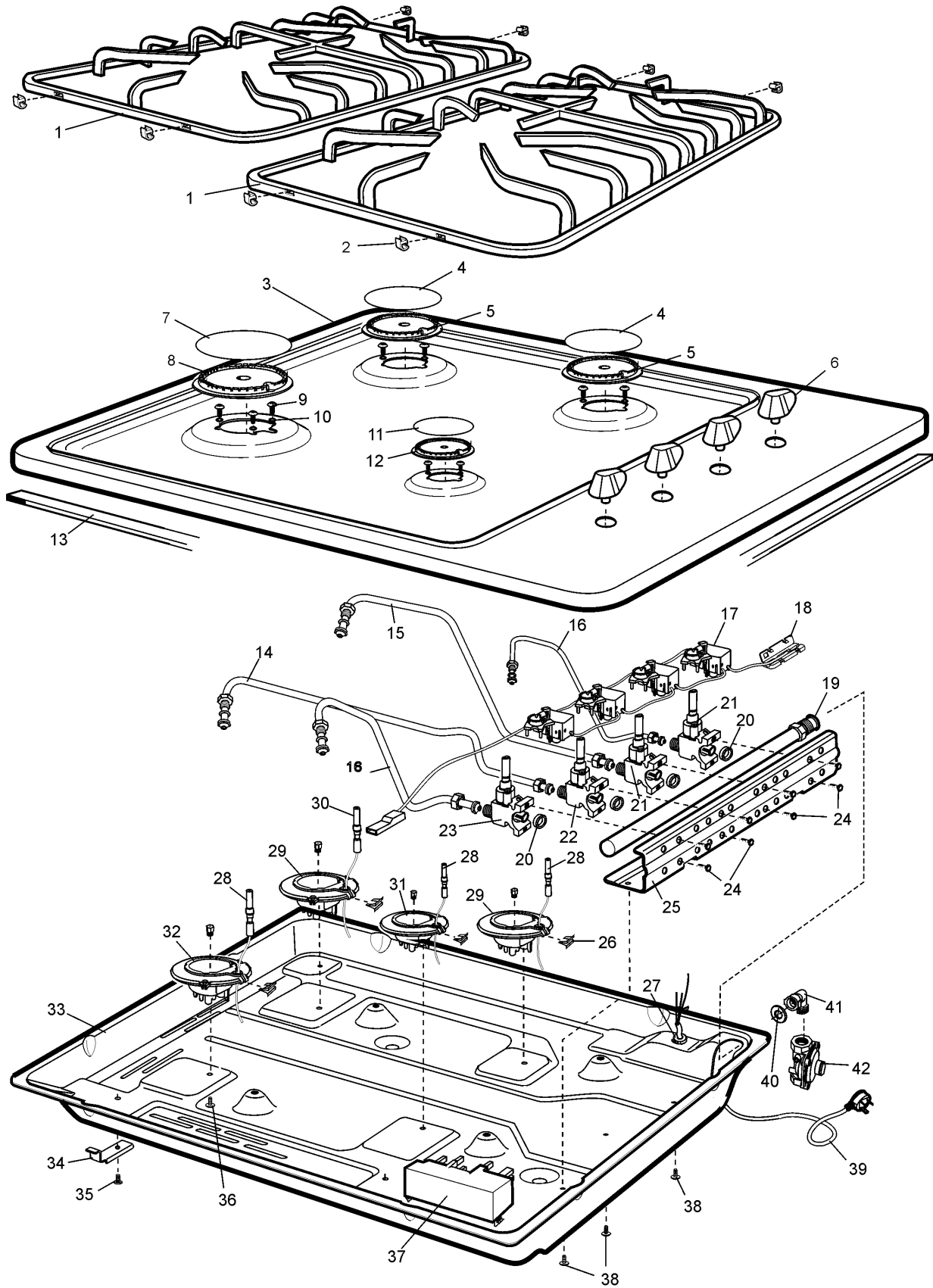
NOTE: In Parts Listings

N.I. = Not Illustrated
N.P.A. = No Part Available
N.P.N. = Not Used on this Model

MODEL: WHG640SB

WHG640WB

COOK TOP ASSY
EX VIEW 8217



ITEM	PART N°	DESCRIPTION EX 8217	S	W
1	305637300	TRIVET STD/STD TALL MATT ENAM	2	2
2	0523001033	TRIVET FOOT	8	8
3	A04557006	HOB TOP PLATE 600 SS	1	
	A04657520	HOB TOP PLATE WHT SCREENED		1
4	354013917	BURNER CAP SR MATT BLACK ENAM	2	2
5	354013712	BURNER CROWN SEMI-RAP CYL MCH	2	2
6	A01389118	KNOB ASSY SS FORTE FC GAS COMM	4	4
7	354013916	BURNER CAP RAP MATT BLACK ENAM	1	1
8	354013606	BURNER CROWN RAPID CYLIND MCH	1	1
9	0702005001	SCREW TORQ #4 X 12 #6 PAN HEAD	8	8
10	N.P.N.	PART OF ITEM 9		
11	354013918	BURNER CAP AUX MATT BLACK ENAM	1	1
12	354013802	BURNER CROWN AUX CYLINDER MCH	1	1
13	305 522101	SEAL SURROUND 2800MM	1	1
14	A13928901	TUBE BURN ELUX SQR LF	1	1
15	A13929001	TUBE BURN ELUX SQR C/TOP LR	1	1
16	A13928801	TUBE BURN ELUX SQR RF/RR	2	2
17	A11892006	SWITCH HARNESS	1	1
18	0712014032	COFFIN INSULATOR 150C 190446-2	1	1
19	0011 002 588	RAIL GAS COOKTOP 4 HOLE CORAL	1	1
20	356525102	GASKET VALVE COPRECI	4	4
21	A05396318	COPRECI SGL VALVE SEMI RAP BL	2	2
22	A05396319	COPRECI SGL VALVE RAPID RED	1	1
23	A05396317	COPRECI SGL VALVE AUX GN	1	1
24	0750003026	SCREW M4 X 16 HEX ZC	8	8
25	305489101	BRACKET GAS RAIL 600/900 WELD	1	1
26	A03381701	SPRING ELECTRODE	4	4
27	0547001106	GROMMET CORD GRIP HEYCO 1217	1	1
28	A01330606	PLUG SPARK 400 MM 260C - ELUX	3	3
29	A04856301	BURNER BODY ASSY S/RAP IGN NG	2	2
30	A01330609	PLUG SPARK 600 MM 260C - ELUX	1	1
31	A04856101	BURNER BODY ASSY AUX IGN NG	1	1
32	A04856401	BURNER BODY ASSY RAP IGN NG	1	1
33	N.P.A.	BOX BURNER	1	1
34	0005 001 168	CLAMP BURNER BOX ELEC C/T	4	4
35	0150005263	SCREW M4 X 8 PAN #2PH ZC	4	4
36	46667	SCREW 3/4X8 PAN Z/P (LP HP AER	4	4
37	A06748401	IGN BOX 4 POINT	1	1
38	305338604	SCREW M3.5X6	3	3
39	A06100501	CABLE - ELECT SUPPLY (10 A)	1	1
40	0115009011	WASHER SEALING	1	1
41	0068007037	FITTING GAS INLET TAPERED BSPT	1	1
42	A00338701	REGULATOR GAS NG INTEG TEST PT	1	1
N.I.	A04855301	BRACKET HEAT SHIELD	1	1
N.I.	305338602	SCREW M4:8	2	2
N.I.	305597600	THERMOCOUPLE 275MM	2	2
N.I.	305597601	THERMOCOUPLE 500MM	2	2

LPG CONVERSION

This appliance is supplied set up for Natural Gas usage. A conversion kit is included with the product for Universal LPG usage. The conversion kit contains the appropriate injectors and 1 LPG sticker.

Please follow the procedure below if a conversion to suit UNIVERSAL LPG is required:

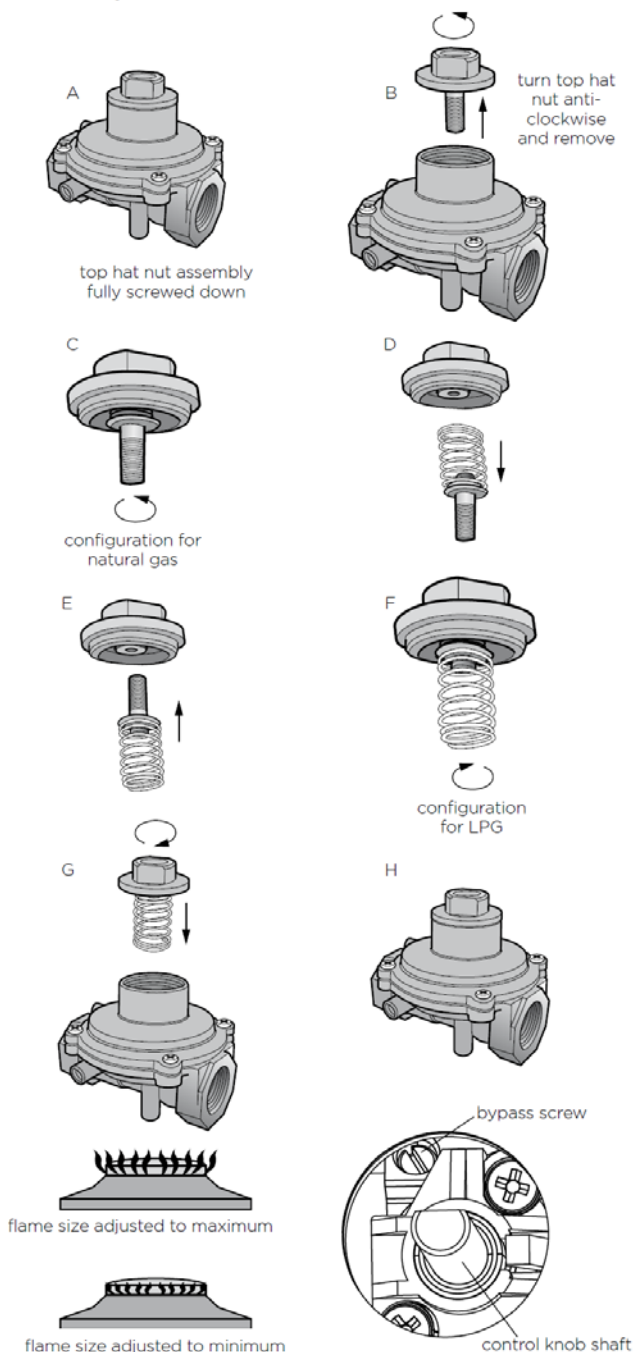
1. Remove the hotplate trivets, burner caps and burner crowns to access the hotplate injectors. Replace the factory fitted injectors with the appropriate injectors, as supplied. Refer to injector orifice table for injector sizes. The injector size is stamped on the side of the injector.
2. Unscrew the top hat nut from the regulator. The top hat nut and control pressure spring assembly will disengage as an assembly.
3. Unscrew the threaded pin from top hat.
4. Upturn threaded pin, so spring is free and screw pin back into the top hat until firm.
5. Refit the top hat nut assembly to the regulator ensuring that it is fully screwed down. The regulator is now set for connection to LPG.
6. Turn on the gas supply and at each new connection check for leaks using soapy water. Each hotplate valve should be turned on, one at a time, and the injector hole blanked off for several seconds.
7. The operation of the regulator can be confirmed by connecting a manometer to the pressure test point located on the side of the regulator body adjacent to the outlet. With the appliance operating check the outlet pressure:
 - when all burners of the appliance are operating at maximum,
 - when the smallest burner of the appliance is operating at minimum.

Under these conditions the outlet pressure should not vary from the nominal outlet pressure of 2.60kPa by more than $\pm 0.52\text{kPa}$.

8. If the regulator appears to not be performing satisfactorily then check the following points:
 - If the outlet pressure is consistently too low then the inlet pressure may be too low and adjustment of an upstream regulator may be needed, or an upstream regulator or valve with insufficient flow capacity may be present in the gas supply line.
 - If this is suspected then it may be necessary to repeat the checks whilst measuring both the inlet and outlet pressure to determine if the inlet pressure is in the range 2.75 – 7.00kPa.
 - Check that the insert has been fitted correctly.
 - Check that the turret screw is fully screwed down.
 - Check that the regulator has been fitted to the gas supply line in the correct orientation, the arrow on the base of the body indicates the direction of gas flow.

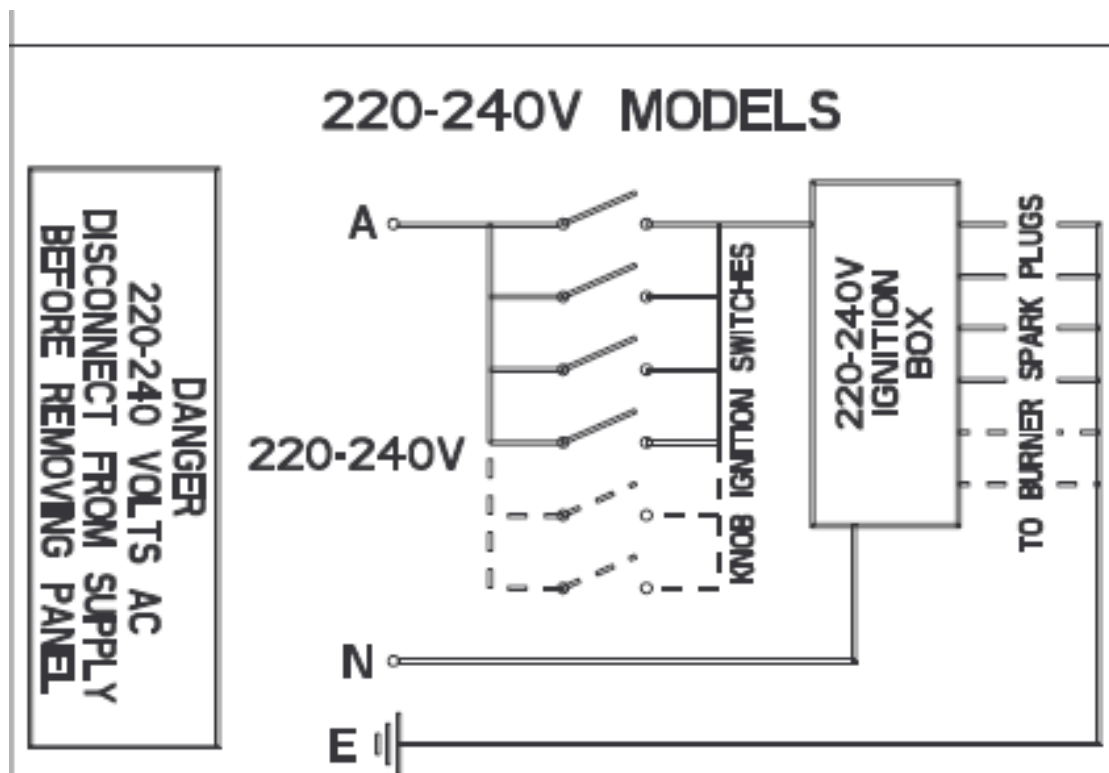
Once these checks have been completed, if the regulator still fails to perform in a satisfactory manner it should be replaced.

9. One by one, turn the knobs to minimum and screw in the bypass screw (accessible when the knob is removed) until a small stable flame results. Turn the knob to maximum and then back to minimum to ensure that the correct minimum flame is maintained.
10. Attach the LPG sticker to the cooker, near the gas supply inlet. Cover the Natural Gas label that is factory fitted.



Kit Part N° ES6013		
PT N°	DESCRIPTION	QTY
0131 002 100	NIPPLE INJECTOR LP/NG 1.0 MM	1
0131 002 135	NIPPLE INJECTOR SEMI R NG 1.35 MM	2
0131 002 406	NIPPLE INJECTOR FISH NG 1.45 MM	1
0131 002 393	NIPPLE INJECTOR RAPID NG 1.60 MM	2
0131 002 403	NIPPLE INJECTOR WOK NG 1.75 MM	1
0131 001 148	NIPPLE INJECTOR AUX LP 0.55 MM	1
0131 001 149	NIPPLE INJECTOR SEMI R LP 0.70 MM	2
0131 001 186	NIPPLE INJECTOR RAPID LP 0.90 MM	2
0294 001 032	REGULATOR GAS NG INTEG TEST PT	1
0296 004 103	STICKER GAS TYPE LPG	1
0296 004 100	STICKER GAS TYPE NG	1
ES6012	INSTRUCTION SHEET	1

Burner Type	Natural Gas (Nominal test point pressure: 1.00kPa)	LPG (Nominal test point pressure: 2.60kPa)
Small	1.00	0.55
Medium	1.35	0.70
Fish	1.45	0.78
Large	1.60	0.90
Wok	1.75	1.00

**WARNING**

IT IS ILLEGAL FOR PERSONS OTHER THAN LICENSED ELECTRICAL MECHANICS OR PERSONS AUTHORISED BY LEGISLATION TO WORK ON THE FIXED WIRING OF ANY ELECTRICAL INSTALLATION. PENALTIES FOR CONVICTION ARE SEVERE.

IMPORTANT SAFETY NOTICE

This diagram has been prepared for use by electrically qualified service technicians. Electrolux cannot be held responsible for the interpretation of its service publications nor for any injury or damage that may occur in connection with their use.