

Electrolux

ELECTROLUX HOME PRODUCTS PTY LTD

ABN 51 004 762 341

Technical Publication Nº CG1109

Issue: 1

Date: 10/18

WESTINGHOUSE

GAS COOKTOPS

MODEL

PNC

WHG955SA

94325394005

WHG955WA

94325397105

Maintenance Level Change Summary

05	Valves and ignition switch harness
-----------	------------------------------------

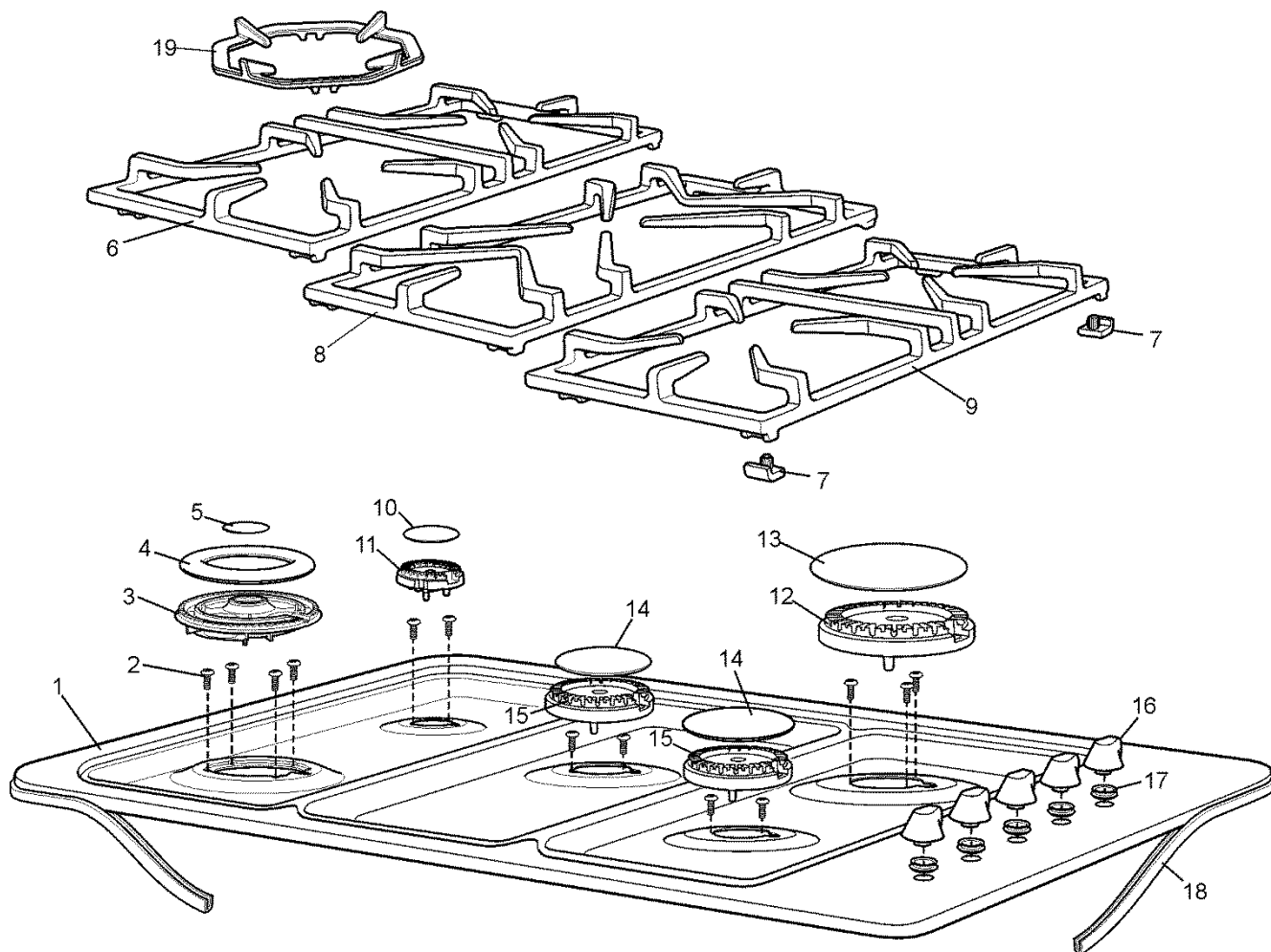
First Built Dates	
WHG955SA	11/18
WHG955WA	11/18

Contents

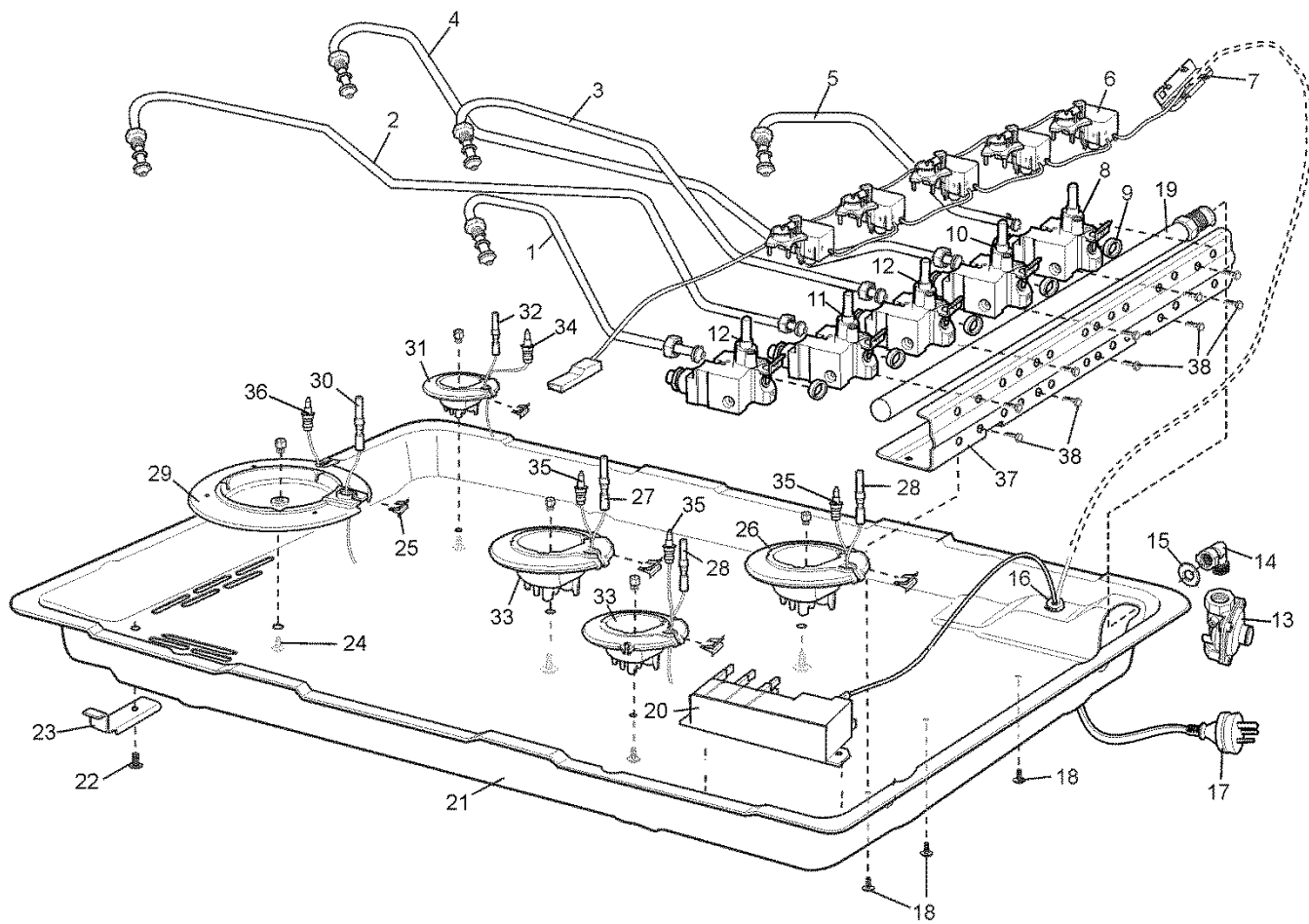
First Built Dates.....	2
Contents.....	3
HOB ASSEMBLY	4
BURNER BOX ASSEMBLY	6
Gas Conversion – Important	8
CIRCUIT DIAGRAM.....	10

NOTE: In Parts Listings

N.I.	=	Not Illustrated
N.P.A.	=	No Part Available
N.P.N.	=	Not Used on this Model



ITEM	PART N°	DESCRIPTION Ex 8287	S	W
1	A03560404	HOB 900 CT SS WH FORTE SCR WOK	1	
	A03560406	HOB 900 CT WH FORTE SCR WOK		1
2	354 3203 01	SCREW 2.9 X 13 PAN T10 ZP	13	13
3	357 7259 15	BURNER ASSY TRIPLE CROWN WOK	1	1
4	389051405	BURNER CAP MATT OUTER WOK	1	1
5	389051305	BURNER CAP MATT INNER WOK	1	1
6	A04238701	TRIVET CAST 90 WOK FORTE SC	1	1
7	305 4388 00	FOOT TRIVET	12	12
8	A04238801	TRIVET CAST 90 CENT FORTE SC	1	1
9	A04238601	TRIVET CAST 90 STD FORTE SC	1	1
10	354013918	BURNER CAP AUX MATT BLACK ENAM	1	1
11	354013802	BURNER CROWN AUX CYLINDER MCH	1	1
12	354013916	BURNER CAP RAP MATT BLACK ENAM	1	1
13	354013606	BURNER CROWN RAPID CYLIND MCH	2	2
14	354013917	BURNER CAP SR MATT BLACK ENAM	1	1
15	354013712	BURNER CROWN SEMI-RAP CYL MCH	2	2
16	A01389118	KNOB ASSY SS FORTE FC GAS COMM	5	5
17	808738501	GROMMET	5	5
18	305 5221 01	SEAL SURROUND 2800MM	1	1
19	305638800	TRIVET CAST WOK SUPPORT FORTE	1	1



ITEM	PART N°	DESCRIPTION EX 8288	QTY
1	A13381501	TUBE RF FSG FORTE COMMERCIAL	1
2	A13942801	TUBE LR FSG FORTE COMMERCIAL	1
3	A13941901	TUBE MID FSG FORTE COMMERCIAL	1
4	A13946901	TUBE LF FSG FORTE COMMERCIAL	1
5	A13381601	TUBE RR FSG FORTE COMMERCIAL	1
6	A11892007	SWITCH HARNESS	1
7	0712 014 030	COFFIN INSULATOR 140C NYLON	2
8	A05396319	COPRECI SGL VALVE RAPID RED	1
9	356525102	GASKET VALVE COPRECI	5
10	A05396317	COPRECI SGL VALVE AUX GN	1
11	A05396320	COPRECI SGL VALVE WOK BK	1
12	A05396318	COPRECI SGL VALVE SEMI RAP BL	2
13	A00338701	REGULATOR GAS NG INTEG TEST PT	1
14	0068 007 037	FITTING GAS INLET TAPERED BSPT	1
15	0115 009 011	WASHER SEALING	1
16	305 5322 00	GROMMET CORD GRIP MP6N4	1
17	A06100501	CABLE - ELECT SUPPLY (10 A)	1
18	305 3882 01	SCREW 6/32 X 3/8 M/SERATED T/C	3
19	0011 002 591	RAIL GAS COOKTOP 5 HOLE GAIL	1
20	A02146801	SPARK GENERATOR WITH 5 OUTLETS	1
21	N.P.A.	BURNER BOX GAIL WASHED HZ	1
22	305 3761 02	SCREW 3/4X8 PAN Z/P (LP HP AER	4
23	A00561202	CLAMP BURNER BOX CORAL/GAIL HZ	4
25	A03381701	CLIP SPARK PLUG ELUX	5
26	A04856401	BURNER BODY ASSY RAPID IGN NG	1
27	A01330609	PLUG SPARK 600 MM ENAMELLED	1
28	A01330606	PLUG SPARK 400 MM ENAMELLED	2
29	A04856505	BURNER BODY ASSY WOK NG	1
30	A01329109	PLUG SPARK WOK 900MM ENAMELLED	1
31	A04856101	BURNER BODY ASSY AUX IGN NG	1
32	A01330612	PLUG SPARK 900 MM ENAMELLED	1
33	A04856301	BURNER BODY ASSY S/RAP IGN NG	2
34	305 5976 01	T'COUPLE TT ELUX BURNER 500	1
35	305 5976 00	T'COUPLE TT ELUX BURNER 275	3
36	305 5977 01	T'COUPLE TT ELUX BRNR WOK 750	1
37	305 4891 00	BRACKET GAS RAIL 600/900 WELD	1
38	305 5175 00	SCREW M4 X 15 HEX ZC	10
N.I.	0065 009 254	NUT METRIC M12 X 1.00	3
N.I.	305 3386 02	SCREW M4 X 8 PHIL	2

LPG CONVERSION

This appliance is supplied set up for Natural Gas usage. A conversion kit is included with the product for Universal LPG usage. The conversion kit contains the appropriate injectors and 1 LPG sticker.

Please follow the procedure below if a conversion to suit UNIVERSAL LPG is required:

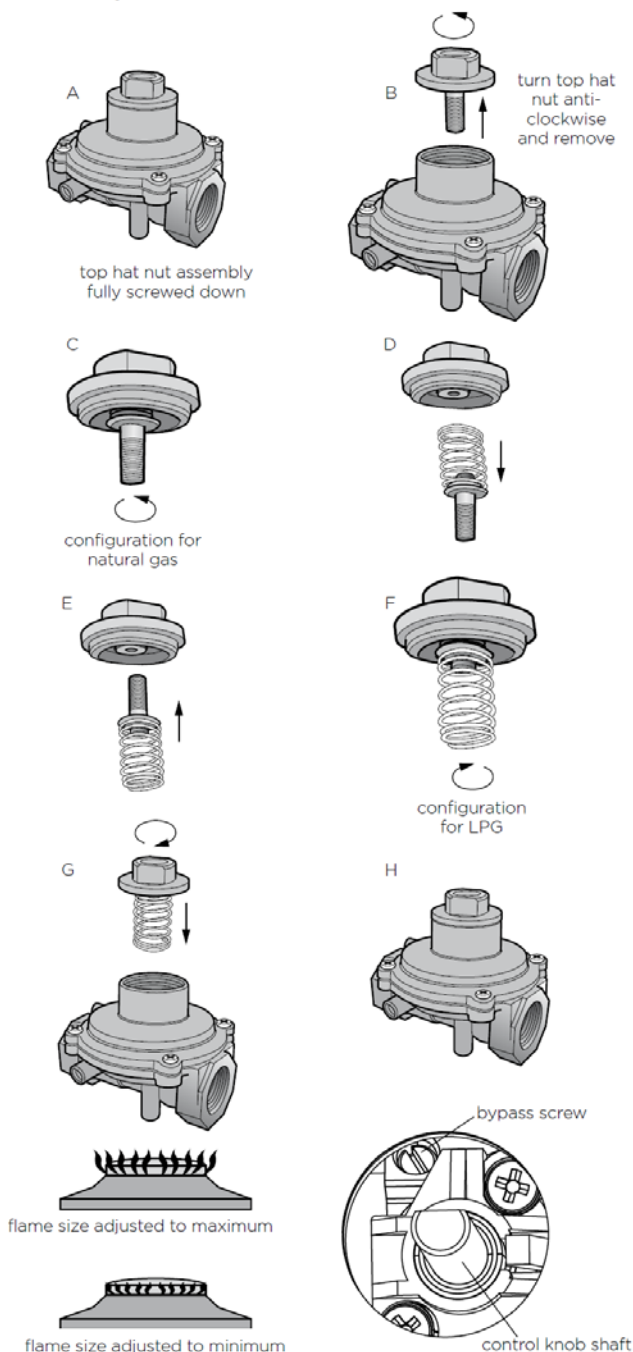
1. Remove the hotplate trivets, burner caps and burner crowns to access the hotplate injectors. Replace the factory fitted injectors with the appropriate injectors, as supplied. Refer to injector orifice table for injector sizes. The injector size is stamped on the side of the injector.
2. Unscrew the top hat nut from the regulator. The top hat nut and control pressure spring assembly will disengage as an assembly.
3. Unscrew the threaded pin from top hat.
4. Upturn threaded pin, so spring is free and screw pin back into the top hat until firm.
5. Refit the top hat nut assembly to the regulator ensuring that it is fully screwed down. The regulator is now set for connection to LPG.
6. Turn on the gas supply and at each new connection check for leaks using soapy water. Each hotplate valve should be turned on, one at a time, and the injector hole blanked off for several seconds.
7. The operation of the regulator can be confirmed by connecting a manometer to the pressure test point located on the side of the regulator body adjacent to the outlet. With the appliance operating check the outlet pressure:
 - when all burners of the appliance are operating at maximum,
 - when the smallest burner of the appliance is operating at minimum.

Under these conditions the outlet pressure should not vary from the nominal outlet pressure of 2.60kPa by more than $\pm 0.52\text{kPa}$.

8. If the regulator appears to not be performing satisfactorily then check the following points:
 - If the outlet pressure is consistently too low then the inlet pressure may be too low and adjustment of an upstream regulator may be needed, or an upstream regulator or valve with insufficient flow capacity may be present in the gas supply line.
 - If this is suspected then it may be necessary to repeat the checks whilst measuring both the inlet and outlet pressure to determine if the inlet pressure is in the range 2.75 – 7.00kPa.
 - Check that the insert has been fitted correctly.
 - Check that the turret screw is fully screwed down.
 - Check that the regulator has been fitted to the gas supply line in the correct orientation, the arrow on the base of the body indicates the direction of gas flow.

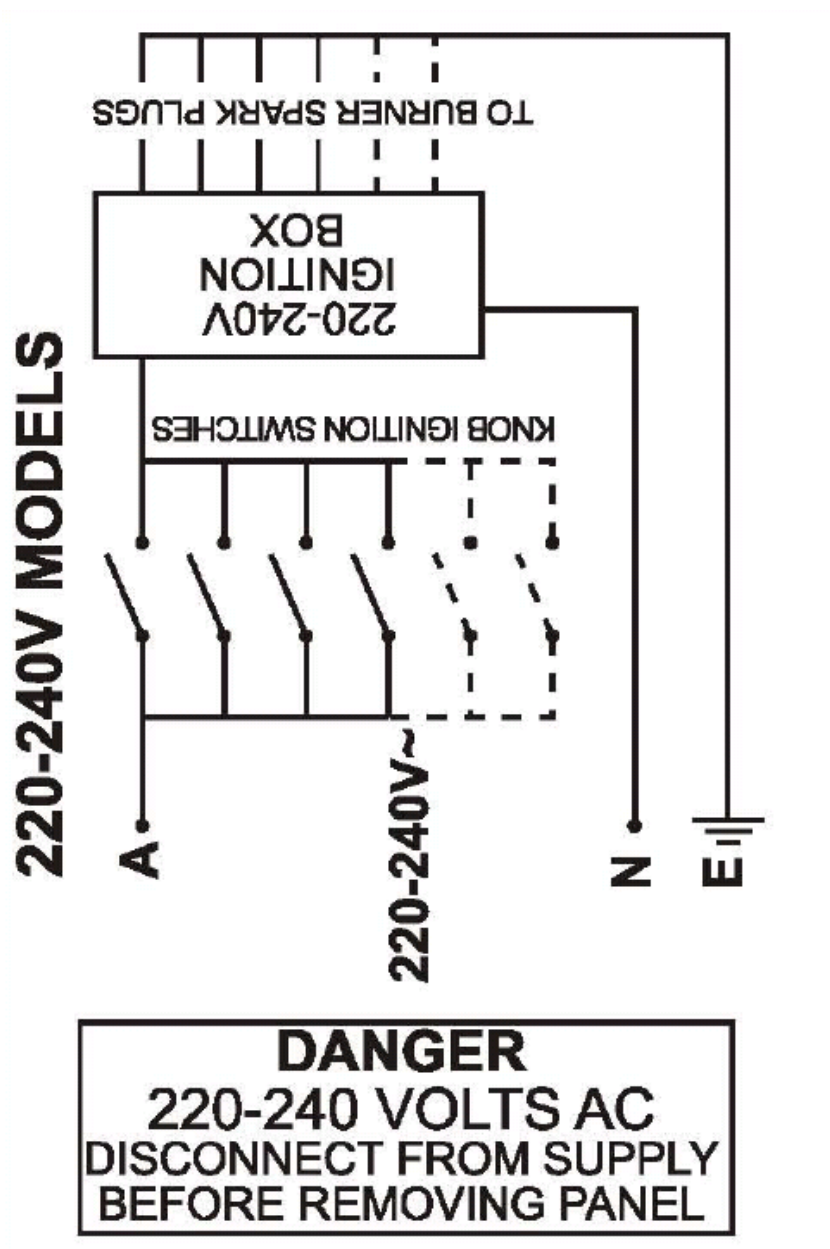
Once these checks have been completed, if the regulator still fails to perform in a satisfactory manner it should be replaced.

9. One by one, turn the knobs to minimum and screw in the bypass screw (accessible when the knob is removed) until a small stable flame results. Turn the knob to maximum and then back to minimum to ensure that the correct minimum flame is maintained.
10. Attach the LPG sticker to the cooker, near the gas supply inlet. Cover the Natural Gas label that is factory fitted.



Kit Part N° ES6013		
PT N°	DESCRIPTION	QTY
0131 002 100	NIPPLE INJECTOR LP/NG 1.0 MM	1
0131 002 135	NIPPLE INJECTOR SEMI R NG 1.35 MM	2
0131 002 406	NIPPLE INJECTOR FISH NG 1.45 MM	1
0131 002 393	NIPPLE INJECTOR RAPID NG 1.60 MM	2
0131 002 403	NIPPLE INJECTOR WOK NG 1.75 MM	1
0131 001 148	NIPPLE INJECTOR AUX LP 0.55 MM	1
0131 001 149	NIPPLE INJECTOR SEMI R LP 0.70 MM	2
0131 001 186	NIPPLE INJECTOR RAPID LP 0.90 MM	2
0294 001 032	REGULATOR GAS NG INTEG TEST PT	1
0296 004 103	STICKER GAS TYPE LPG	1
0296 004 100	STICKER GAS TYPE NG	1
ES6012	INSTRUCTION SHEET	1

Burner Type	Natural Gas (Nominal test point pressure: 1.00kPa)	LPG (Nominal test point pressure: 2.60kPa)
Small	1.00	0.55
Medium	1.35	0.70
Fish	1.45	0.78
Large	1.60	0.90
Wok	1.75	1.00

**WARNING**

IT IS ILLEGAL FOR PERSONS OTHER THAN LICENSED ELECTRICAL MECHANICS OR PERSONS AUTHORISED BY LEGISLATION TO WORK ON THE FIXED WIRING OF ANY ELECTRICAL INSTALLATION. PENALTIES FOR CONVICTION ARE SEVERE.

IMPORTANT SAFETY NOTICE

This diagram has been prepared for use by electrically qualified service technicians. Electrolux cannot be held responsible for the interpretation of its service publications nor for any injury or damage that may occur in connection with their use.