

# Electrolux

**ELECTROLUX HOME PRODUCTS PTY LTD**

**ABN 51 004 762 341**

**Technical Publication N° CG1080**

**Issue: 1**

**Date: 8/17**

***WESTINGHOUSE***

***GAS  
COOKTOPS***

**MODEL**

**WHG643SA**

**PNC**

**94325393803**

Maintenance Level Change Summary	
<b>03</b>	Burner Caps

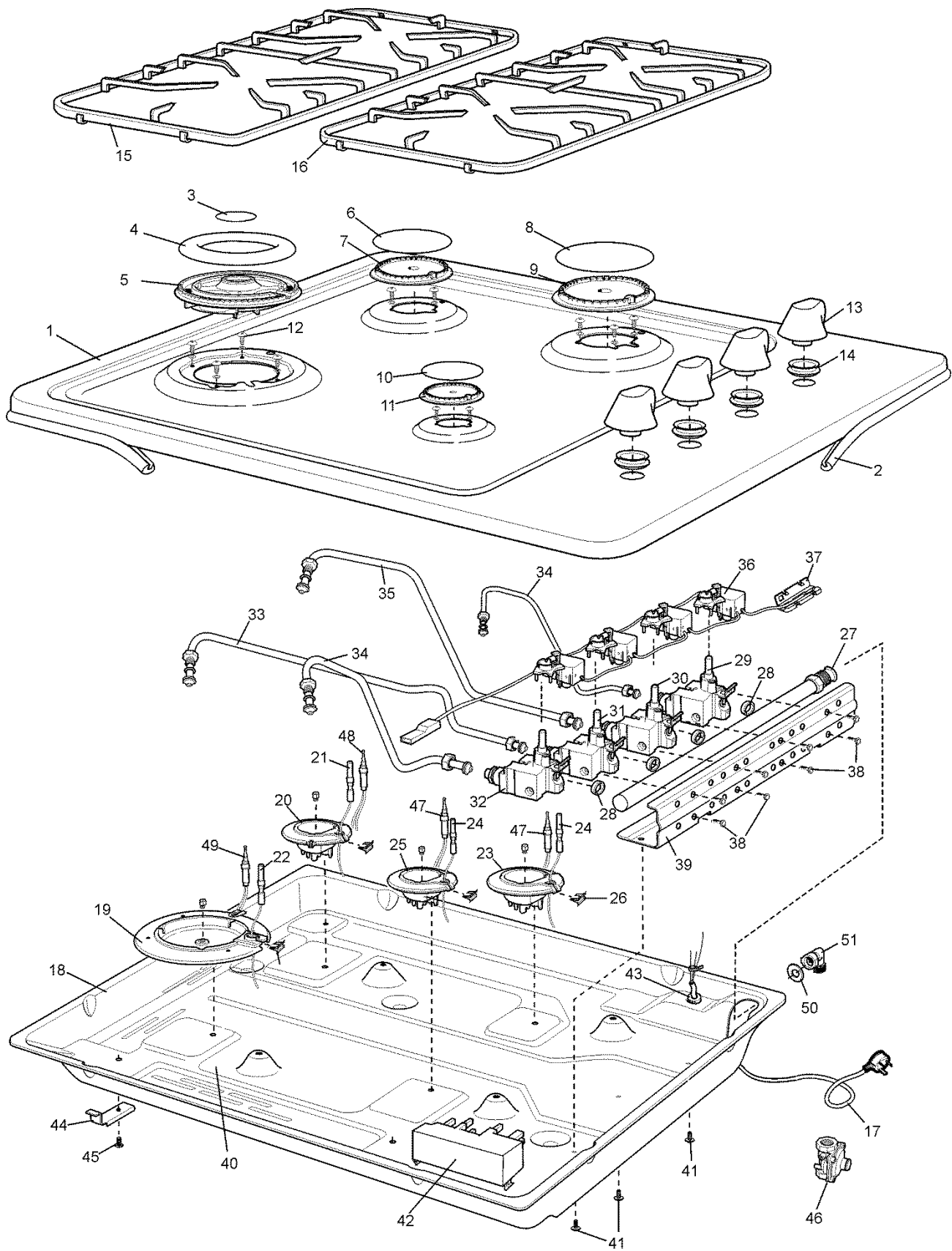
First Built Dates	
<b>WHG643SA</b>	<b>8/17</b>

## Contents

First Built Dates.....	2
Contents.....	3
COOKTOP ASSEMBLY .....	4
Gas Conversion .....	6
CIRCUIT DIAGRAM.....	8

### NOTE: In Parts Listings

N.I.	=	Not Illustrated
N.P.A.	=	No Part Available
N.P.N.	=	Not Used on this Model



ITEM	PART N°	DESCRIPTION Ex 8283	QTY
1	<b>A03560402</b>	HOB 600 CT SS WH FORTE SCR WOK	1
2	<b>305 5221 00</b>	SEAL SURROUND 2320MM	1
3	<b>389051305</b>	BURNER CAP MATT INNER WOK	1
4	<b>389051405</b>	BURNER CAP MATT OUTER WOK	1
5	<b>357 7259 15</b>	BURNER ASSY TRIPLE CROWN WOK	1
6	<b>354013917</b>	BURNER CAP SR MATT BLACK ENAM	1
7	<b>354013712</b>	BURNER CROWN SEMI-RAP CYL MCH	1
8	<b>354013916</b>	BURNER CAP RAP MATT BLACK ENAM	1
9	<b>354013606</b>	BURNER CROWN RAPID CYLIND MCH	1
10	<b>354013918</b>	BURNER CAP AUX MATT BLACK ENAM	1
11	<b>354013802</b>	BURNER CROWN AUX CYLINDER MCH	1
12	<b>354 3203 01</b>	SCREW 2.9 X 13 PAN T10 ZP	10
13	<b>A01389118</b>	KNOB ASSY SS FORTE FC GAS COMM	4
14	<b>808738501</b>	GROMMET	4
15	<b>A04079501</b>	TRIVET WIRE STD/WOK FORTE SC	1
16	<b>A04276201</b>	TRIVET WIRE STD/STD FORTE SC	1
	<b>305 4353 00</b>	FOOT TRIVET (PART OF ITEMS 15 & 16)	8
17	<b>A06100501</b>	CABLE - ELECT SUPPLY (10 A)	1
18	<b>N.P.A.</b>	BURNER BOX CORAL WASHED HZ	1
19	<b>A04856505</b>	BURNER BODY ASSY WOK NG	1
20	<b>A04856301</b>	BURNER BODY ASSY S/RAP IGN NG	1
21	<b>A01330609</b>	PLUG SPARK 600 MM ENAMELLED	1
22	<b>A01329105</b>	PLUG SPARK WOK 500MM ENAMELLED	1
23	<b>A04856401</b>	BURNER BODY ASSY RAPID IGN NG	1
24	<b>A01330606</b>	PLUG SPARK 400 MM ENAMELLED	2
25	<b>A04856101</b>	BURNER BODY ASSY AUX IGN NG	1
26	<b>A03381701</b>	CLIP SPARK PLUG ELUX	4
27	<b>0011 002 588</b>	RAIL GAS COOKTOP 4 HOLE CORAL	1
28	<b>0208 003 419</b>	SEAL VALVE SOURDILLON	4
29	<b>305 4486 18</b>	VALVE GAS BSI FSG RAPID RED	1
30	<b>305 4486 17</b>	VALVE GAS BSI FSG SEMI RAP BL	1
31	<b>305 4486 19</b>	VALVE GAS BSI FSG WOK BLACK	1
32	<b>305 4486 16</b>	VALVE GAS BSI FSG AUX GREEN	1
33	<b>A04089401</b>	TUBE BURN SQR C/TOP LF FSG	1
34	<b>A04089301</b>	TUBE BURN SQR C/TOP RF/RR FSG	2
35	<b>A04089501</b>	TUBE BURN SQR C/TOP LR FSG	1
36	<b>A01014007</b>	SWITCH HARNESS 4PT	1
37	<b>0712 014 030</b>	COFFIN INSULATOR 140C NYLON	2
38	<b>305 5175 00</b>	SCREW M4 X 15 HEX ZC	8
39	<b>305 4891 00</b>	BRACKET GAS RAIL 600/900 WELD	1
40	<b>305 3386 02</b>	SCREW M4 X 8 PHIL	2
41	<b>305 3882 01</b>	SCREW 6/32 X 3/8 M/SERATED T/C	3
42	<b>809165501</b>	IGN BOX 4PT 240V JAVA	1
43	<b>305 5322 00</b>	GROMMET CORD GRIP MP6N4	1
44	<b>A00561202</b>	CLAMP BURNER BOX CORAL/GAIL HZ	4
45	<b>305 3761 02</b>	SCREW 3/4X8 PAN Z/P (LP HP AER	4
46	<b>A00338701</b>	REGULATOR GAS NG INTEG TEST PT	1
47	<b>305 5976 00</b>	T'COUPLE TT ELUX BURNER 275	2
48	<b>305 5976 01</b>	T'COUPLE TT ELUX BURNER 500	1
49	<b>305 5977 01</b>	T'COUPLE TT ELUX BRNR WOK 750	1
50	<b>0115 009 011</b>	WASHER SEALING	1
51	<b>0068 007 037</b>	FITTING GAS INLET TAPERED BSPT	1

## Gas Conversion – Important

**NOTE:** THIS KIT MUST BE FITTED BY A LICENSED GAS FITTER.  
A CERTIFICATE OF COMPLIANCE MUST BE SUPPLIED TO BE KEPT BY THE CUSTOMER.

Please follow the procedure below if a conversion to LPG or NG is required.

The conversion kit contains injectors to suit NG and LPG  
1 X LPG sticker and 1X NG sticker. (see overleaf)

1. Remove the hotplate burners to access the hotplate injectors.
2. Replace the injectors with the appropriate injectors. (see table below).
3. Unscrew the hex nut from the regulator. The hex nut, brass washer and nylon insert will disengage from the regulator as an assembly.
4. Unclip the nylon insert from the nut assembly by rotating the insert 1/4 turn and pulling it free. (Figure 2)
5. Correctly orientate the insert and clip back into position. (Figure 3)
6. Refit the hex nut assembly to the regulator ensuring that it is fully screwed down.
7. Turn on the gas supply and at each new connection, check for leaks using soapy water.

8. The operation of the regulator can be confirmed by connecting a manometer to the pressure test point located on the side of the regulator body. (Fig 1) With the appliance operating check the outlet pressure. (see table below)

- When all burners of the appliance are operating at maximum,
- When the smallest burner of the appliance is operating at minimum.

9. One by one, turn the knobs to minimum and adjust the bypass screw (accessible when the knob is removed) until a small stable flame results. Turn the knob to maximum and then back to minimum to ensure that the correct minimum flame is maintained.

10. Attach the correct sticker to the cooker, near the gas supply inlet. (Remove or cover the old sticker)

Burner Type	Natural Gas (Nominal test point pressure: 1.00kPa)	LPG (Nominal test point pressure: 2.60kPa)
Small	1.00	0.55
Medium	1.35	0.70
Fish	1.45	0.78
Large	1.60	0.90
Wok	1.75	1.00

Fig 1

Hex nut assembly fully screwed down.

Pressure Test Point.

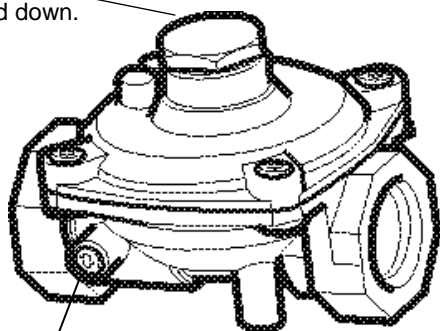


Fig 2

Hex nut assembly removed from regulator and insert disassembled.

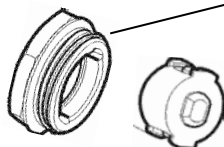
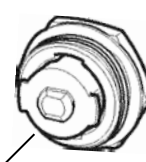
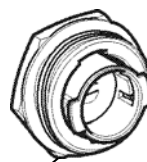


Fig 3

Insert orientated for natural gas operation.

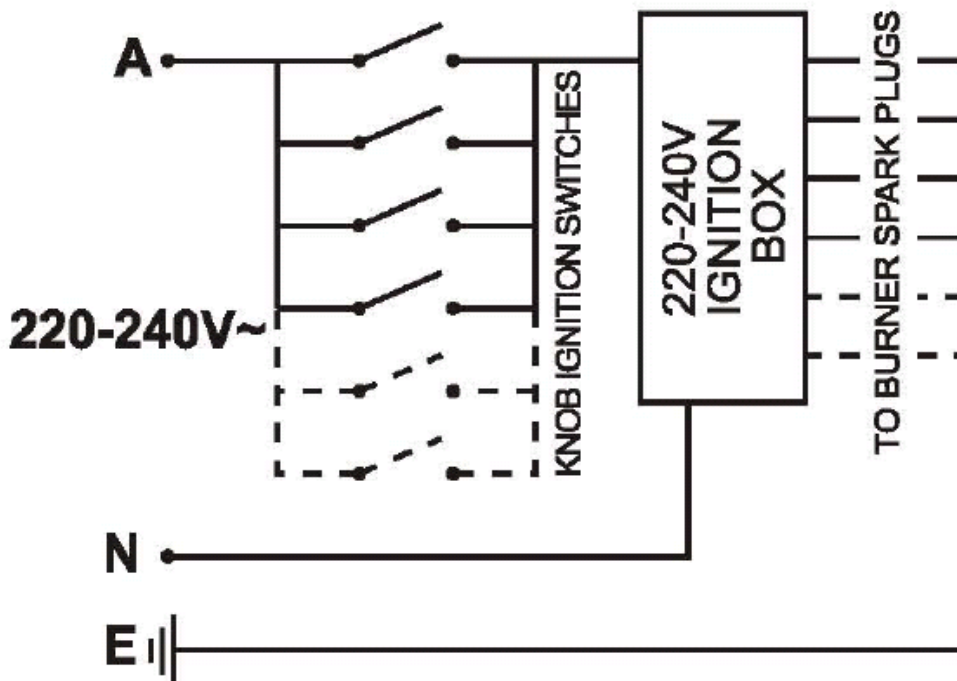
Insert orientated for LPG operation.



<b>Kit Part N° ES6013</b>		
<b>PT N°</b>	<b>DESCRIPTION</b>	<b>QTY</b>
<b>0131 002 100</b>	NIPPLE INJECTOR LP/NG 1.0 MM	1
<b>0131 002 135</b>	NIPPLE INJECTOR SEMI R NG 1.35 MM	2
<b>0131 002 406</b>	NIPPLE INJECTOR FISH NG 1.45 MM	1
<b>0131 002 393</b>	NIPPLE INJECTOR RAPID NG 1.60 MM	2
<b>0131 002 403</b>	NIPPLE INJECTOR WOK NG 1.75 MM	1
<b>0131 001 148</b>	NIPPLE INJECTOR AUX LP 0.55 MM	1
<b>0131 001 149</b>	NIPPLE INJECTOR SEMI R LP 0.70 MM	2
<b>0131 001 186</b>	NIPPLE INJECTOR RAPID LP 0.90 MM	2
<b>0294 001 032</b>	REGULATOR GAS NG INTEG TEST PT	1
<b>0296 004 103</b>	STICKER GAS TYPE LPG	1
<b>0296 004 100</b>	STICKER GAS TYPE NG	1
<b>ES6012</b>	INSTRUCTION SHEET	1

**220-240V MODELS**

**DANGER**  
220-240 VOLTS AC  
DISCONNECT FROM SUPPLY  
BEFORE REMOVING PANEL

**WARNING**

IT IS ILLEGAL FOR PERSONS OTHER THAN LICENSED ELECTRICAL MECHANICS OR PERSONS AUTHORISED BY LEGISLATION TO WORK ON THE FIXED WIRING OF ANY ELECTRICAL INSTALLATION. PENALTIES FOR CONVICTION ARE SEVERE.

**IMPORTANT SAFETY NOTICE**

This diagram has been prepared for use by electrically qualified service technicians. Electrolux cannot be held responsible for the interpretation of its service publications nor for any injury or damage that may occur in connection with their use.