

# Electrolux

**ELECTROLUX HOME PRODUCTS PTY LTD**

ABN 51 004 762 341

Technical Publication N° CG1043

Issue: 1

Date: 12/16

***WESTINGHOUSE***

***GAS COOKTOPS***

***MODELS:***

**WHG640SA**

**PNC 94325378502**

**WHG640WA**

**PNC 94325378102**

Maintenance Level Change Summary
----------------------------------

<b>02</b> Switch Harness and Service Cord.
--

<b>First Built Dates:</b>	
---------------------------	--

<b>WHG640SA</b>	<b>12/16</b>
<b>WHG640WA</b>	<b>12/16</b>

<b>CONTENTS</b>	<b>PAGE Nº</b>
FIRST BUILT DATES	2
CONTENTS	3
COOKTOP ASSEMBLY	4 - 5
GAS CONVERSION & KIT	6
CIRCUIT DIAGRAM	7

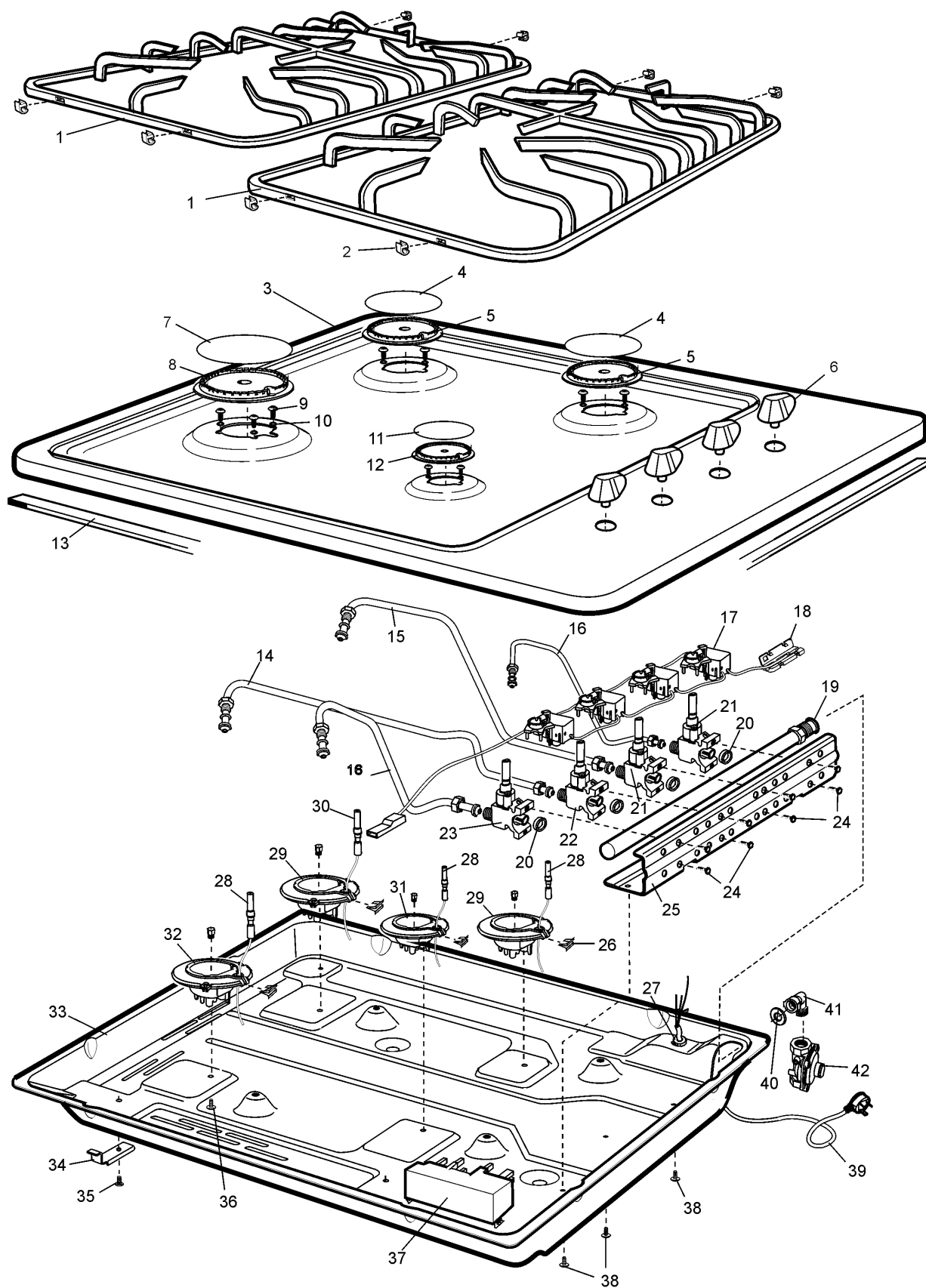
**NOTE: In Parts Listings**

**N.I. = Not Illustrated**  
**N.P.A. = No Part Available**  
**N.P.N. = Not Used on this Model**

MODELS: WHG640SA

WHG640WA

COOK TOP ASSY  
EX VIEW 8217



ITEM	PART N°	DESCRIPTION Ex. 8217	S	W
1	<b>305637300</b>	TRIVET STD/STD TALL MATT ENAM	2	2
2	<b>052300103</b>	TRIVET FOOT	8	8
3	<b>A01512002</b>	HOB 600 CT SS WHOUSE SCR STD	1	
	<b>A01512001</b>	HOB 600 CT WHT WHOUSE SCR STD		1
4	<b>808950805</b>	CAP BURNER S/R MATT CYL	2	2
5	<b>354013702</b>	BURNER CROWN/S/R	2	2
6	<b>A01389111</b>	KNOB S/S WHOUSE	4	4
7	<b>305 381900</b>	CAP BURNER RAP MATT CYL	1	1
8	<b>354013606</b>	BURNER CROWN/RAP	1	1
9	<b>0702005001</b>	SCREW TORQ #4 X 12 #6 PAN HEAD	8	8
10	<b>N.P.N</b>	NOT ON THIS MODEL		
11	<b>808950804</b>	CAP BURNER AUX MATT CYL	1	1
12	<b>354013802</b>	BURNER CROWN/AUX	1	1
13	<b>305 522101</b>	SEAL SURROUND 2800MM	1	1
14	<b>0055007086</b>	TUBE BURN ELUX SQR C/TOP LF	1	1
15	<b>0055007087</b>	TUBE BURN ELUX SQR C/TOP LR	1	1
16	<b>0055007085</b>	TUBE BURN ELUX SQR C/TOP RF/RR	2	2
17	<b>A01014007</b>	SWITCH HARNESS 4P SOURDILLON	1	1
18	<b>0712014032</b>	COFFIN INSULATOR 150C 190446-2	1	1
19	<b>3005457500</b>	RAIL GAS COOKTOP 4 HOLE CORAL	1	1
20	<b>0208003419</b>	SEAL VALVE SOURDILLON	4	4
21	<b>305448509</b>	VALVE GAS C/T CNT BSI S/RAPID STD BL	2	2
22	<b>305448510</b>	VALVE GAS C/T CNT BSI /RAPID STD RED	1	1
23	<b>305448508</b>	VALVE GAS C/T CNT BSI AUX STD GR	1	1
24	<b>0750003026</b>	SCREW M4 X 16 HEX ZC	8	8
25	<b>0030024126</b>	BRACKET GAS RAIL 600/900 WELD	1	1
26	<b>354308102</b>	CLIP SPARK PLUG ELUX MO/A 120	4	4
27	<b>0547001106</b>	GROMMET CORD GRIP HEYCO 1217	1	1
28	<b>A01330606</b>	PLUG SPARK 400 MM 260C - ELUX	3	3
29	<b>A04856301</b>	BURNER BODY ASSY S/RAP IGN NG	2	2
30	<b>A01330609</b>	PLUG SPARK 600 MM 260C - ELUX	1	1
31	<b>A04856101</b>	BURNER BODY ASSY AUX IGN NG	1	1
32	<b>A04856401</b>	BURNER BODY ASSY RAPID IGN NG	1	1
33	<b>305385903</b>	BOX BURNER CORAL WASHED HZ	1	1
34	<b>0005001168</b>	CLAMP BURNER BOX ELEC C/T	4	4
35	<b>0150005263</b>	SCREW M4 X 8 PAN #2PH ZC	4	4
36	<b>46667</b>	SCREW 3/4X8 PAN Z/P (LP HP AER	4	4
37	<b>0673001073</b>	IGN BOX 4 POINT - 240V HMJD	1	1
38	<b>46657</b>	SCREW 6/32 X 3/8 M/SERATED T/C	3	3
39	<b>A06100501</b>	CABLE - ELECT SUPPLY (10 A)	1	1
40	<b>0115009011</b>	WASHER SEALING	1	1
41	<b>0068007037</b>	FITTING GAS INLET TAPERED BSPT	1	1
42	<b>A00338701</b>	REGULATOR GAS NG INTEG TEST PT	1	1

# Gas Conversion – Important

**NOTE:** THIS KIT MUST BE FITTED BY A LICENSED GAS FITTER.

A CERTIFICATE OF COMPLIANCE MUST BE SUPPLIED TO BE KEPT BY THE CUSTOMER.

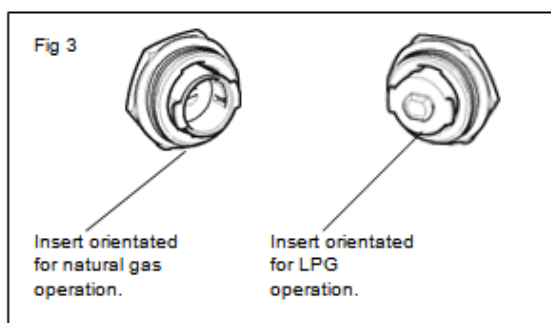
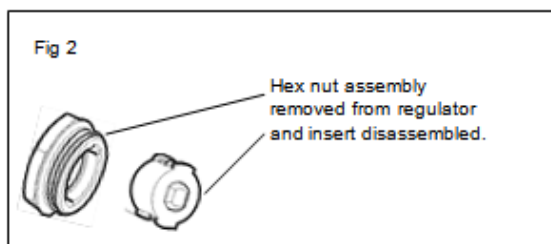
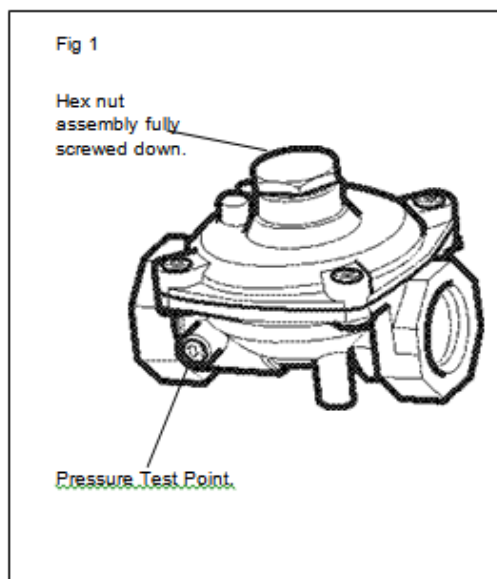
Please follow the procedure below if a conversion to LPG or NG is required.

1. Remove the hotplate burners to access the hotplate injectors.
2. Replace the injectors with the appropriate injectors. (see table below).
3. Unscrew the hex nut from the regulator. The hex nut, brass washer and nylon insert will disengage from the regulator as an assembly.
4. Unclip the nylon insert from the nut assembly by rotating the insert 1/4 turn and pulling it free. (Figure 2)
5. Correctly orientate the insert and clip back into position. (Figure 3)
6. Refit the hex nut assembly to the regulator ensuring that it is fully screwed down.
7. Turn on the gas supply and at each new connection, check for leaks using soapy water

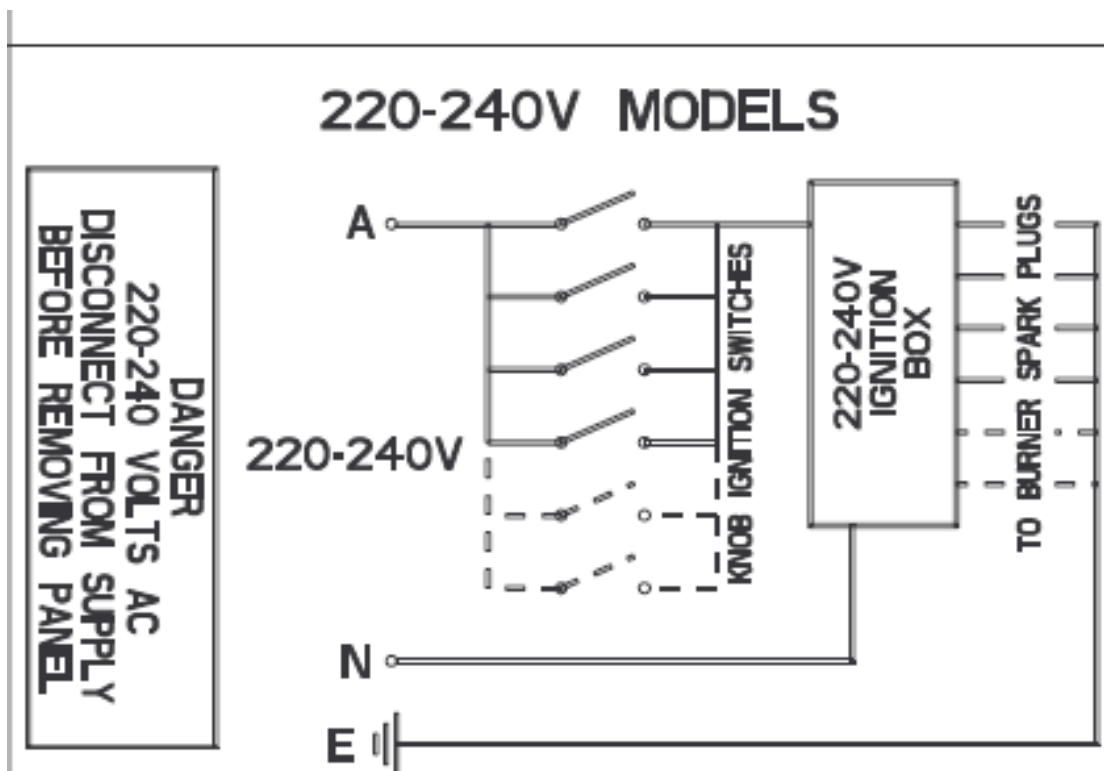
8. The operation of the regulator can be confirmed by connecting a manometer to the pressure test point located on the side of the regulator body. (Fig 1) With the appliance operating check the outlet pressure. (see table below)

- When all burners of the appliance are operating at maximum,
  - When the smallest burner of the appliance is operating at minimum.
9. One by one, turn the knobs to minimum and adjust the bypass screw (accessible when the knob is removed) until a small stable flame results. Turn the knob to maximum and then back to minimum to ensure that the correct minimum flame is maintained.
10. Attach the correct sticker to the cooker, near the gas supply inlet. (Remove or cover the old sticker)

Burner Type	Natural Gas (Nominal test point pressure: 1.00kPa)	LPG (Nominal test point pressure: 2.60kPa)
Small	1.00	0.55
Medium	1.35	0.70
Large	1.60	0.90
Wok	1.75	1.00



305387300 LP conversion kit	
0131002391	NIPPLE INJECTOR NG/LP 1.00
0131002410	NIPPLE INJECTOR RAP LP 0.90
0131002409	NIPPLE INJECTOR SEMI LP 0.70
0131002408	NIPPLE INJECTOR AUX LP 0.55
0296004103	STICKER GAS TYPE - LPG
Note there are 5 jets in the kit , covers all models	
Natural Gas jets	
0131002392	NIPPLE INJECTOR SEMI R NG 1.35
0131002391	NIPPLE INJECTOR NG/LP 1.00
0131002403	NIPPLE INJ 1.75 ELUX WOK NG
0131002393	NIPPLE INJECTOR RAPID NG 1.60

**WARNING**

IT IS ILLEGAL FOR PERSONS OTHER THAN LICENSED ELECTRICAL MECHANICS OR PERSONS AUTHORISED BY LEGISLATION TO WORK ON THE FIXED WIRING OF ANY ELECTRICAL INSTALLATION. PENALTIES FOR CONVICTION ARE SEVERE.

**IMPORTANT SAFETY NOTICE**

This diagram has been prepared for use by electrically qualified service technicians. Electrolux cannot be held responsible for the interpretation of its service publications nor for any injury or damage that may occur in connection with their use.