



**ELECTROLUX HOME PRODUCTS PTY LTD**  
ABN 51 004 762 341

Technical Publication N° CG165.doc

Issue: 1  
Date: 10/09

**WEB SITE ADDRESS: [www.partnship.com.au](http://www.partnship.com.au)**

***WESTINGHOUSE***

***GAS COOKTOPS***

***MODELS:***

**GHM12S\*50**

**PNC 943253666 50**

**GHM12W\*50**

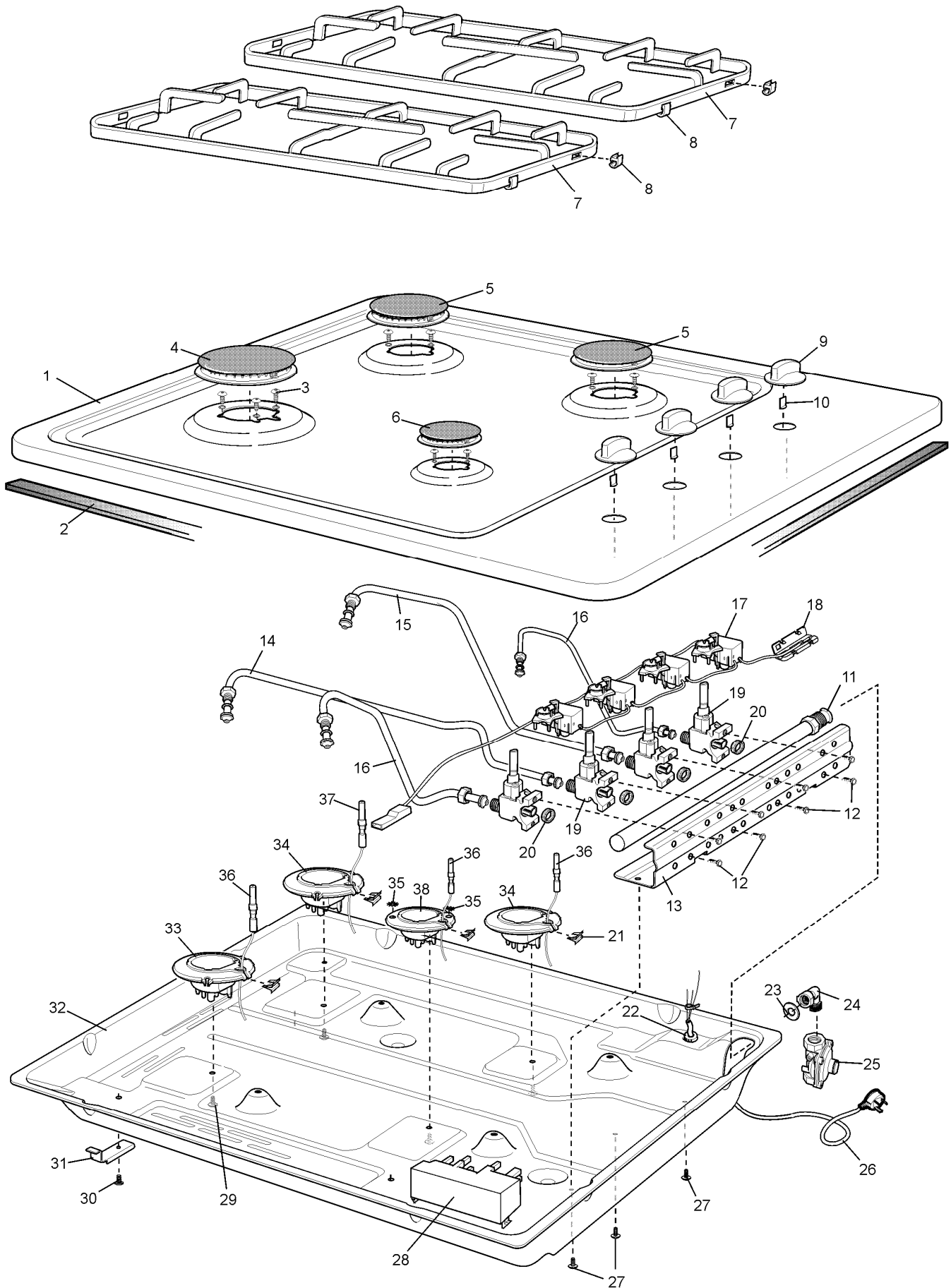
**PNC 943253665 50**

| <b>First Built Dates:</b> |             |
|---------------------------|-------------|
| <b>GHM12S*50</b>          | <b>9/09</b> |
| <b>GHM12W*50</b>          | <b>9/09</b> |

| <b>CONTENTS</b>      | <b>PAGE Nº</b> |
|----------------------|----------------|
| FIRST BUILT DATES    | 2              |
| CONTENTS             | 3              |
| COOKTOP ASSEMBLY     | 4 - 5          |
| GAS CONVERSION & KIT | 6 - 7          |
| CIRCUIT DIAGRAM      | 8              |

**NOTE: In Parts Listings**

**N.I. = Not Illustrated**  
**N.P.A. = No Part Available**  
**N.P.N. = Not Used on this Model**



| ITEM   | PART N°      | DESCRIPTION Ex 6264                          | S | W |
|--|--------------|--|---|---|
| 1  | 305 4516 01  | HOB 600 CT SS WHOUSE SCR STD                 | 1 |   |
|  | 305 4516 00  | HOB 600 CT WHT WHOUSE SCR STD                |   | 1 |
| 2  | 356 5189 03  | SEAL MASTIC - 550MM                          | 1 | 1 |
| 3  | 0702 005 001 | SCREW TORQ #4 X 12 #6 PAN HEAD (INC ITEM 3a) | 8 | 8 |
| 3a   | REFER ITEM 3 | WASHER (PT OF ITEM 3)                        | 8 | 8 |
| 4  | 305 3819 00  | BURNER CROWN/CAP RAP MATT CYL                | 1 | 1 |
| 5  | 305 3818 00  | BURNER CROWN/CAP S/R MATT CYL                | 2 | 2 |
| 6  | 305 3817 00  | BURNER CROWN/CAP AUX MATT CYL                | 1 | 1 |
| 7  | 305 4515 00  | TRIVET STD/STD TALL MATT ENAM (INC ITEM 8)   | 2 | 2 |
| 8  | 0523 001 031 | TRIVET FOOT (PT OF ITEM 7)                   | 8 | 8 |
| 9  | 305 4514 01  | KNOB S/S WHOUSE GHM12 GAS CT (INC ITEM 10)   | 4 |   |
|  | 305 4514 00  | KNOB WHITE WHOUSE GHM12 GAS CT (INC ITEM 10) |   | 4 |
| 10   | 29143982     | CLIP KNOB (PT OF ITEM 9)                     | 4 | 4 |
| 11   | 0011 002 588 | RAIL GAS COOKTOP 4 HOLE CORAL                | 1 | 1 |
| 12   | 0750 003 026 | SCREW M4 X 16 HEX ZC                         | 8 | 8 |
| 13   | 0030 024 126 | BRACKET GAS RAIL 600/900 WELD                | 1 | 1 |
| 14   | 0055 007 086 | TUBE BURN ELUX SQR C/TOP LF                  | 1 | 1 |
| 15   | 0055 007 087 | TUBE BURN ELUX SQR C/TOP LR                  | 1 | 1 |
| 16   | 0055 007 085 | TUBE BURN ELUX SQR C/TOP RF/RR               | 2 | 2 |
| 17   | 0534 001 706 | SWITCH HARNESS 4P SOURDILLON                 | 1 | 1 |
| 18   | 0712 014 032 | COFFIN INSULATOR 150C 190446-2               | 1 | 1 |
| 19   | 305 3198 00  | VALVE GAS C/T CNT AUX STD GR                 | 4 | 4 |
| 20   | 0208 003 419 | SEAL VALVE SOURDILLON                        | 4 | 4 |
| 21   | 0125 008 356 | CLIP SPARK PLUG ELUX MO/A 120                | 4 | 4 |
| 22   | 0547 001 106 | GROMMET CORD GRIP HEYCO 1217                 | 1 | 1 |
| 23   | 0115 009 011 | WASHER SEALING                               | 1 | 1 |
| 24   | 0068 007 037 | FITTING GAS INLET TAPERED BSPT               | 1 | 1 |
| 25   | 0294 001 032 | REGULATOR GAS NG INTEG TEST PT               | 1 | 1 |
| 26   | 0215 002 092 | CABLE - ELECT SUPPLY (10 A)                  | 1 | 1 |
| 27   | 46657        | SCREW 6/32 X 3/8 M/SERATED T/C               | 3 | 3 |
| 28   | 0673 001 054 | IGN BOX 4P - 240V ISPRA (BLUE)               | 1 | 1 |
| 29   | 0150 005 263 | SCREW M4 X 8 PAN #2PH ZC                     | 4 | 4 |
| 30   | 46667        | SCREW 3/4X8 PAN Z/P (LP HP AER               | 4 | 4 |
| 31   | 0005 001 168 | CLAMP BURNER BOX ELEC C/T                    | 4 | 4 |
| 32   | 305 3859 03  | BOX BURNER CORAL WASHED HZ                   | 1 | 1 |
| 33   | 0004 008 428 | BURNER BODY ASSY RAPID IGN NG                | 1 | 1 |
| 34   | 0004 008 426 | BURNER BODY ASSY S/RAP IGN NG                | 2 | 2 |
| 35   | *354 3212 09 | WASHER S/P EXTERNAL 4.3 X 8 ZP               | 2 | 2 |
| 36   | 357 0448 17  | PLUG SPARK 400 MM 260C - ELUX                | 3 | 3 |
| 37   | 357 0448 15  | PLUG SPARK 600 MM 260C - ELUX                | 1 | 1 |
| 38   | 305 4501 00  | BURNER BODY ASSY AUX IGN NG                  | 1 | 1 |
| <b>NOTE * ITEM 35 MUST BE FITTED PROVIDES AN EARTH</b> |              |  |   |   |

## Gas Conversion – Important

**NOTE:** THIS KIT MUST BE FITTED BY A LICENSED GAS FITTER.  
A CERTIFICATE OF COMPLIANCE MUST BE SUPPLIED TO BE KEPT BY THE CUSTOMER.

Please follow the procedure below if a conversion to LPG or NG is required.

1. Remove the hotplate burners to access the hotplate injectors.
2. Replace the injectors with the appropriate injectors. (see table below).
3. Unscrew the hex nut from the regulator. The hex nut, brass washer and nylon insert will disengage from the regulator as an assembly.
4. Unclip the nylon insert from the nut assembly by rotating the insert 1/4 turn and pulling it free. (Figure 2)
5. Correctly orientate the insert and clip back into position. (Figure 3)
6. Refit the hex nut assembly to the regulator ensuring that it is fully screwed down.
7. Turn on the gas supply and at each new connection, check for leaks using soapy water.

8. The operation of the regulator can be confirmed by connecting a manometer to the pressure test point located on the side of the regulator body. (Fig 1) With the appliance operating check the outlet pressure. (see table below)

- When all burners of the appliance are operating at maximum,
- When the smallest burner of the appliance is operating at minimum.

9. One by one, turn the knobs to minimum and adjust the bypass screw (accessible when the knob is removed) until a small stable flame results. Turn the knob to maximum and then back to minimum to ensure that the correct minimum flame is maintained.

10. Attach the correct sticker to the cooker, near the gas supply inlet. (Remove or cover the old sticker)

| Burner Type | Natural Gas<br>(Nominal test point pressure: 1.00kPa) | LPG<br>(Nominal test point pressure: 2.60kPa) |
|-------------|---|---|
| Small       | 1.00  | 0.55  |
| Medium      | 1.35  | 0.70  |
| Fish        | 1.45  | 0.78  |
| Large       | 1.60  | 0.90  |
| Wok         | 1.75  | 1.00  |

Fig 1

Hex nut assembly fully screwed down.

Pressure Test Point.

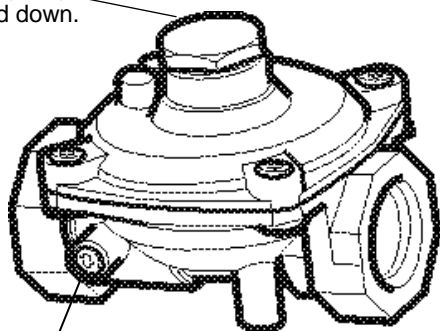


Fig 2

Hex nut assembly removed from regulator and insert disassembled.

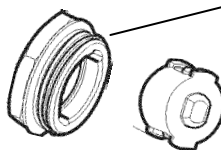
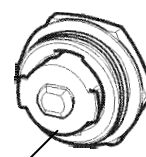
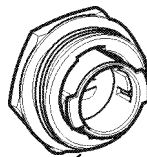


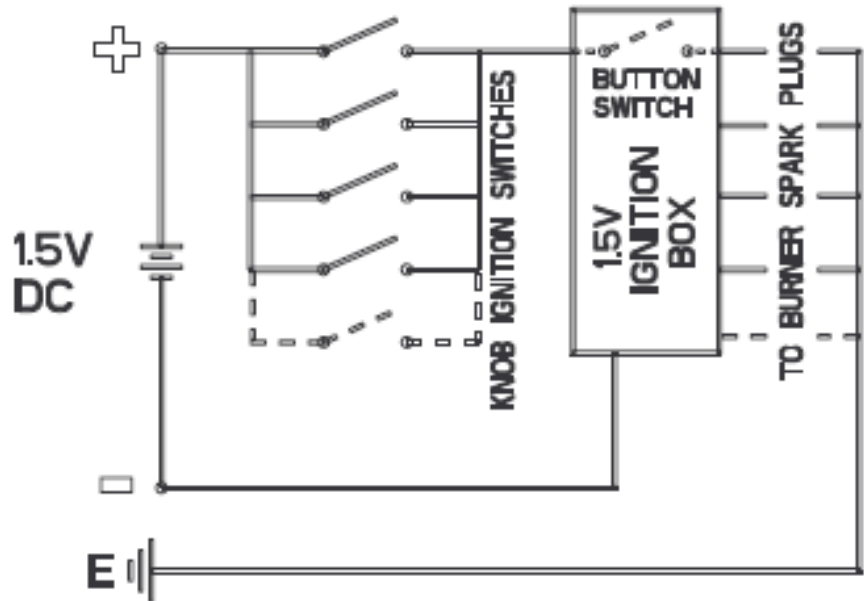
Fig 3

Insert orientated for natural gas operation.

Insert orientated for LPG operation.



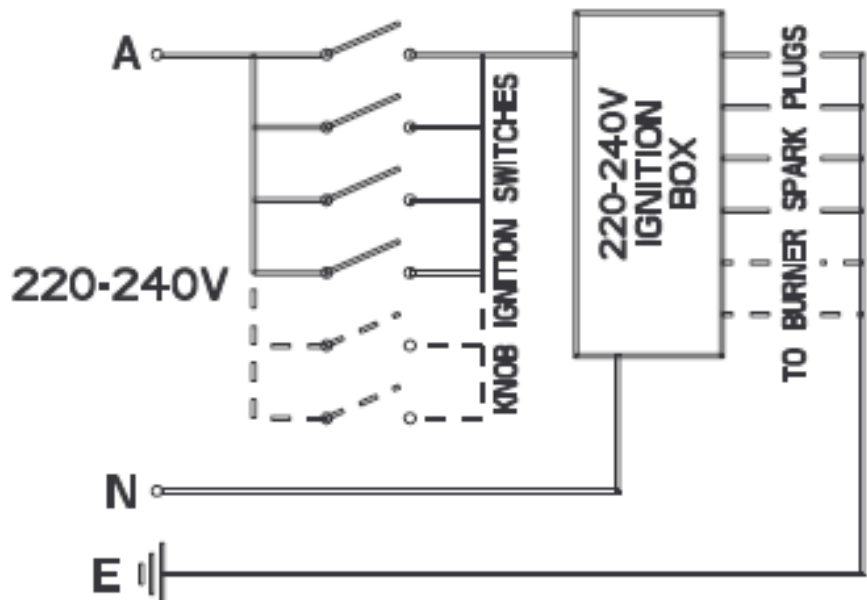
| <b>Kit Part N° ES6013</b>                      |                                   |            |
|--|-----------------------------------|------------|
| <b>PT N°</b>                                   | <b>DESCRIPTION</b>                | <b>QTY</b> |
| <b>0131 002 100</b>                            | NIPPLE INJECTOR LP/NG 1.0 MM      | 1          |
| <b>0131 002 135</b>                            | NIPPLE INJECTOR SEMI R NG 1.35 MM | 2          |
| <b>0131 001 198</b>                            | NIPPLE INJECTOR FISH NG 1.45 MM   | 1          |
| <b>0131 002 393</b>                            | NIPPLE INJECTOR RAPID NG 1.60 MM  | 2          |
| <b>0131 002 403</b>                            | NIPPLE INJECTOR WOK NG 1.75 MM    | 1          |
| <b>0131 001 148</b>                            | NIPPLE INJECTOR AUX LP 0.55 MM    | 1          |
| <b>0131 001 149</b>                            | NIPPLE INJECTOR SEMI R LP 0.70 MM | 2          |
| <b>0131 002 078</b>                            | NIPPLE INJECTOR FISH LP 0.78 MM   | 1          |
| <b>0131 001 199</b>                            | NIPPLE INJECTOR RAPID LP 0.90 MM  | 2          |
| <b>0296 004 103</b>                            | STICKER GAS TYPE LPG              | 1          |
| <b>0296 004 100</b>                            | STICKER GAS TYPE NG               | 1          |
| <b>ES6012</b>                                  | INSTRUCTION SHEET                 | 1          |
| <b>NOTE THIS KIT SUITS LP OR NG CONVERSION</b> |                                   |            |

**1.5V BATTERY MODELS**

**WARNING**  
DO NOT CONNECT  
BATTERY IGNITION MODELS  
TO MAINS SUPPLY

Use of Hose Assemblies:

Ensure that the hose assembly is restrained from accidental contact with the flue outlet of an underbench oven or any other hot surface of an adjacent appliance.

**220-240V MODELS**

**DANGER**  
220-240 VOLTS AC  
DISCONNECT FROM SUPPLY  
BEFORE REMOVING PANEL

**WARNING**

IT IS ILLEGAL FOR PERSONS OTHER THAN LICENSED ELECTRICAL MECHANICS OR PERSONS AUTHORISED BY LEGISLATION TO WORK ON THE FIXED WIRING OF ANY ELECTRICAL INSTALLATION. PENALTIES FOR CONVICTION ARE SEVERE.

**IMPORTANT SAFETY NOTICE**

This diagram has been prepared for use by electrically qualified service technicians. Electrolux cannot be held responsible for the interpretation of its service publications nor for any injury or damage that may occur in connection with their use.