



# Electrolux

**ELECTROLUX HOME PRODUCTS PTY LTD**  
ABN 51 004 762 341

Technical Publication N° RH087

Issue: 4  
Date: 08/16

## ***WESTINGHOUSE UNIVERSAL COOKER HOODS***

**NOTE: THIS PUBLICATION SUPERSEDES PREVIOUS  
RH087 ISSUE 2 FOR MODELS LISTED BELOW.  
FOR INSTALLATION INSTRUCTIONS, REFER RHSI059**

### ***MODELS:***

**WRJ600UK  
WRJ603UW  
WRJ611US  
WRJ900US  
WRJ903UK  
WRJ911US**

**WRJ600US  
WRJ900UW  
WRJ903UW**

**WRJ600UW**

VARIANT CHANGE SUMMARY	

First Built Dates:	
WRJ600UK	May '05
WRJ600US	May '05
WRJ600UW	May '05
WRJ603UW	May '05
WRJ611US	May '05
WRJ900US	May '05
WRJ900UW	May '05
WRJ903UK	May '05
WRJ903UW	May '05
WRJ911US	May '05

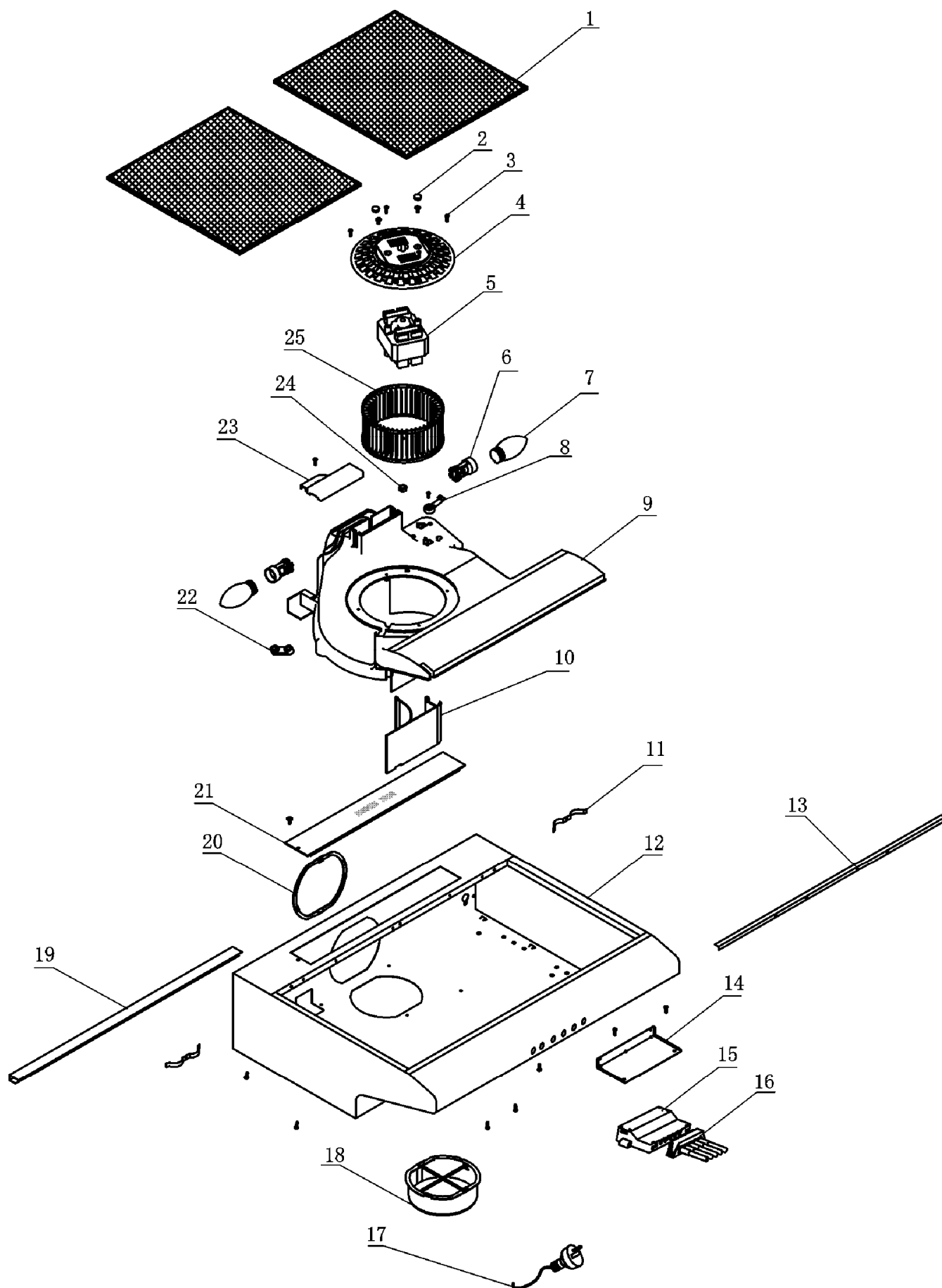
<b>CONTENTS</b>	<b>PAGE N°</b>
VARIANT CHANGES & FIRST BUILD DATES	2
CONTENTS & ABBREVIATION DETAILS	3
UNIVERSAL 600 COOKER HOOD ASSY – PUSH BUTTON SINGLE MOTOR	4 – 5
UNIVERSAL 600 COOKER HOOD ASSY – PUSH BUTTON DUAL MOTOR	6 – 7
UNIVERSAL 900 COOKER HOOD ASSY – PUSH BUTTON SINGLE MOTOR	8 – 9
UNIVERSAL 900 COOKER HOOD ASSY – PUSH BUTTON DUAL MOTOR	10 - 11
UNIVERSAL 600/900 COOKER HOOD SINGLE MOTOR CIRCUIT DIAGRAM	12
CIRCUIT DIAGRAM - UNIVERSAL 600/900 COOKER HOOD DUAL MOTOR	13

**NOTE: In Parts Listings**

**N.I. = Not Illustrated**  
**N.P.A. = No Part Available**  
**N.P.N. = Not Used on this Model**

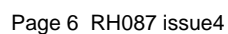
MODELS: WRJ600UK  
WRJ600US  
WRJ600UW

EX. VIEW DRAWING 5278  
UNIVERSAL COOKER HOOD  
SINGLE MOTOR – PUSH BUTTON



ITEM	PART N°	DESCRIPTION Ex. 5278	UK	US	UW
1	<b>ACC187</b>	Filter 276 x 315 x 10mm (Pack of 2)	1	1	1
2	<b>E600A0211</b>	Screw Cap	2	2	2
3	<b>N.P.A.</b>	Screw	-	-	-
4	<b>Refer Item 5</b>	Motor Bracket (Included with Item 5)	1	1	1
5	<b>E610060</b>	Motor L/H Turbo Fan Nut & Brkt Assy 600mm Motor Wires (Includes Item 2, 3, 4, 24 & 25)	1	1	1
6	<b>E610006X2WD</b>	Lamp Holder	2	2	2
7	<b>0060002083K</b>	Kit Lamp 40W Candle 240V	2	2	2
8	<b>E600A0203</b>	Select Lever	1	1	1
9	<b>N.P.A.</b>	Chamber	1	1	1
10	<b>E610010</b>	Fan Flap	1	1	1
11	<b>0120009312</b>	Spring Filter Clip	2	2	2
12	<b>N.P.A.</b>	Metal Casing	1	1	1
13	<b>N.P.A.</b>	Front Filter Channel	1	1	1
14	<b>N.P.A.</b>	Switch Box Support	1	1	1
15	<b>Refer Item 16</b>	Switch Box (Included with Item 16)	1	1	1
16	<b>E610031-34T</b>	Push Button Switch PCB & Box	1	1	1
17	<b>E600A0311</b>	Power Cord	1	1	1
18	<b>AR125RFA</b>	Kit-125mm Round Flue Adaptor	1	1	1
19	<b>N.P.A.</b>	Rear Filter Channel	1	1	1
20	<b>E610024</b>	Outlet Cover	1	1	1
21	<b>E610025</b>	Lens Diffuser 40W	1	1	1
22	<b>N.P.A.</b>	Cord Press Piece	1	1	1
23	<b>N.P.A.</b>	Lamp Cover	1	1	1
24	<b>Refer Item 5</b>	Nut (Included with Item 5)	1	1	1
25	<b>Refer Item 5</b>	Turbo Fan (Included with Item 5)	1	1	1
N.I.	<b>ARCFD</b>	Carbon Filter (Accessory)	X	X	X

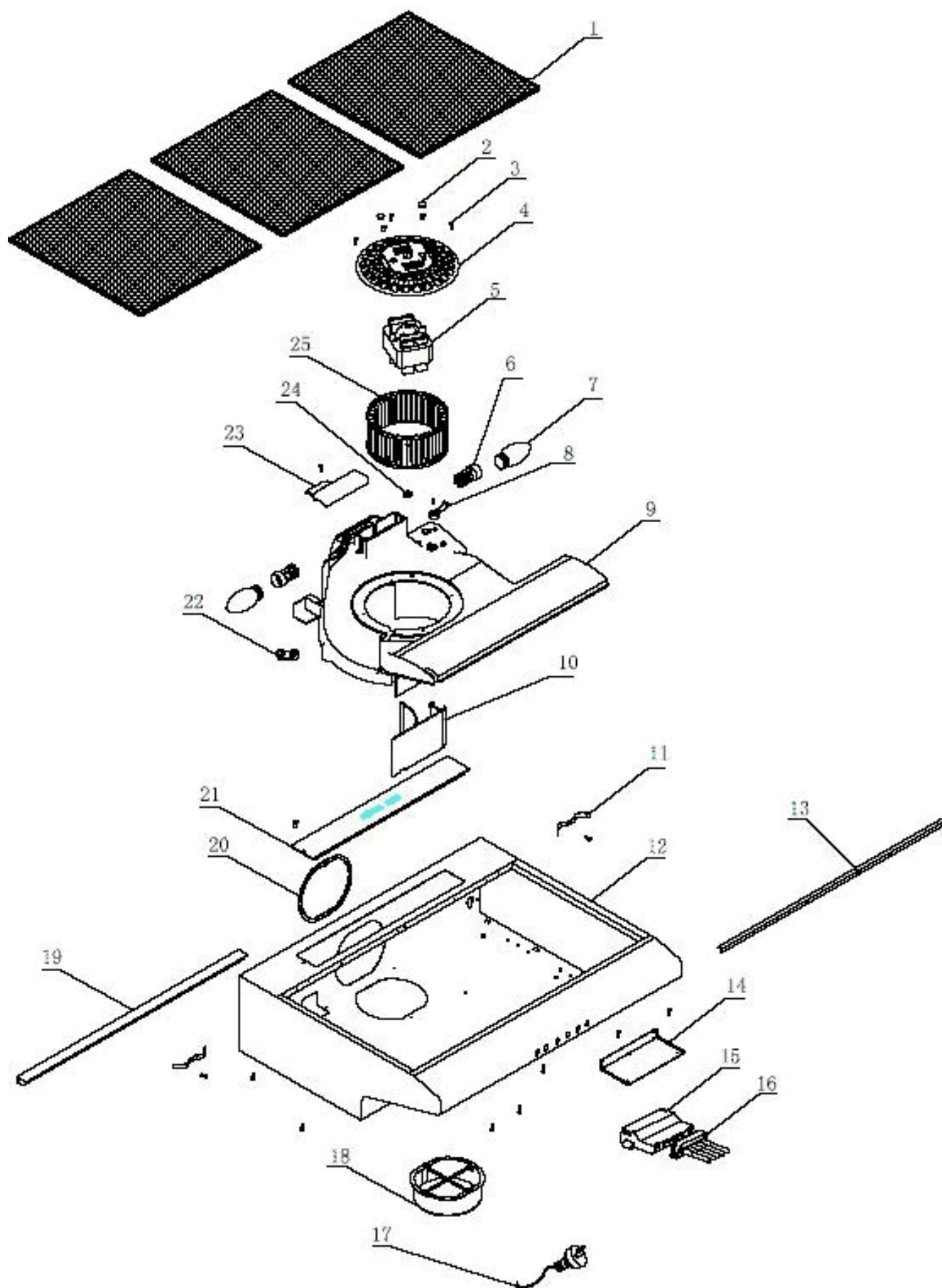
**EX. VIEW DRAWING 5279  
UNIVERSAL COOKER HOOD  
PUSH BUTTON - DUAL MOTOR**



ITEM	PART N°	DESCRIPTION Ex. 5279	603 UW	611 US
1	<b>E610024</b>	Outlet Cover	1	1
2	<b>N.P.A.</b>	Metal Casing – White	1	
	<b>N.P.A.</b>	Metal Casing – Stainless Steel		1-
3	<b>N.P.A.</b>	Front Filter Support	1	1
4	<b>Refer Item 5</b>	Switch Box (Included with Item 5)	1	1
5	<b>E610031-34T</b>	Push Button Switch PCB & Box	1	1
6	<b>N.P.A.</b>	Screw	-	-
7	<b>N.P.A.</b>	Switch Box Support	1	1
8	<b>0060002083K</b>	Kit Lamp 40W Candle 240V	2	2
9	<b>E610006X2WD</b>	Lamp Holder	1	1
10	<b>N.P.A.</b>	Chamber Cover Board	1	1
11	<b>Refer Item 13</b>	Nut (Included With Item 13)	-	-
12	<b>Refer Item 13</b>	Turbo Fan L/H (Included With Item 13)	1	1
	<b>Refer Item 13</b>	Turbo Fan R/H (Included With Item 13)	1	1
13	<b>E620002-6L</b>	Motor L/H Turbo Fan Nut & Brkt Assy 210mm Motor Wires (Includes Item 11, 12 & 14)	1	1
	<b>E620002-6R</b>	Motor R/H Turbo Fan Nut & Brkt Assy 210mm Motor Wires (Includes Item 11, 12 & 14)	1	1
14	<b>Refer Item 13</b>	Motor Bracket (Included With Item 13)	1	1
15	<b>E600A0211</b>	Screw Cap	4	4
16	<b>ACC187</b>	Filter 276 x 315 x 10mm (Pack of 2)	1	1
17	<b>E610021</b>	Cord Service 1900mm	1	1
18	<b>N.P.A.</b>	Connection Box	1	1
19	<b>E600A0203</b>	Select Lever	2	2
20	<b>N.P.A.</b>	Chamber	1	1
21	<b>N.P.A.</b>	Cord Press Piece	1	1
22	<b>E600C02031</b>	Fan Flap (L/H)	1	1
	<b>E600C02032</b>	Fan Flap (R/H)	1	1
23	<b>E610025</b>	Lens Diffuser 40W	1	1
24	<b>0120 009 312</b>	Spring Filter Clip	2	2
25	<b>N.P.A.</b>	Rear Filter Support	1	1
26	<b>AR125RFA</b>	Kit-125mm Round Flue Adaptor	1	1
N.I.	<b>ARCFD</b>	Carbon Filter (Accessory)	X	X

MODELS: WRJ900US  
WRJ900UW

EX. VIEW DRAWING 5280  
UNIVERSAL COOKER HOOD  
PUSH BUTTON - SINGLE MOTOR

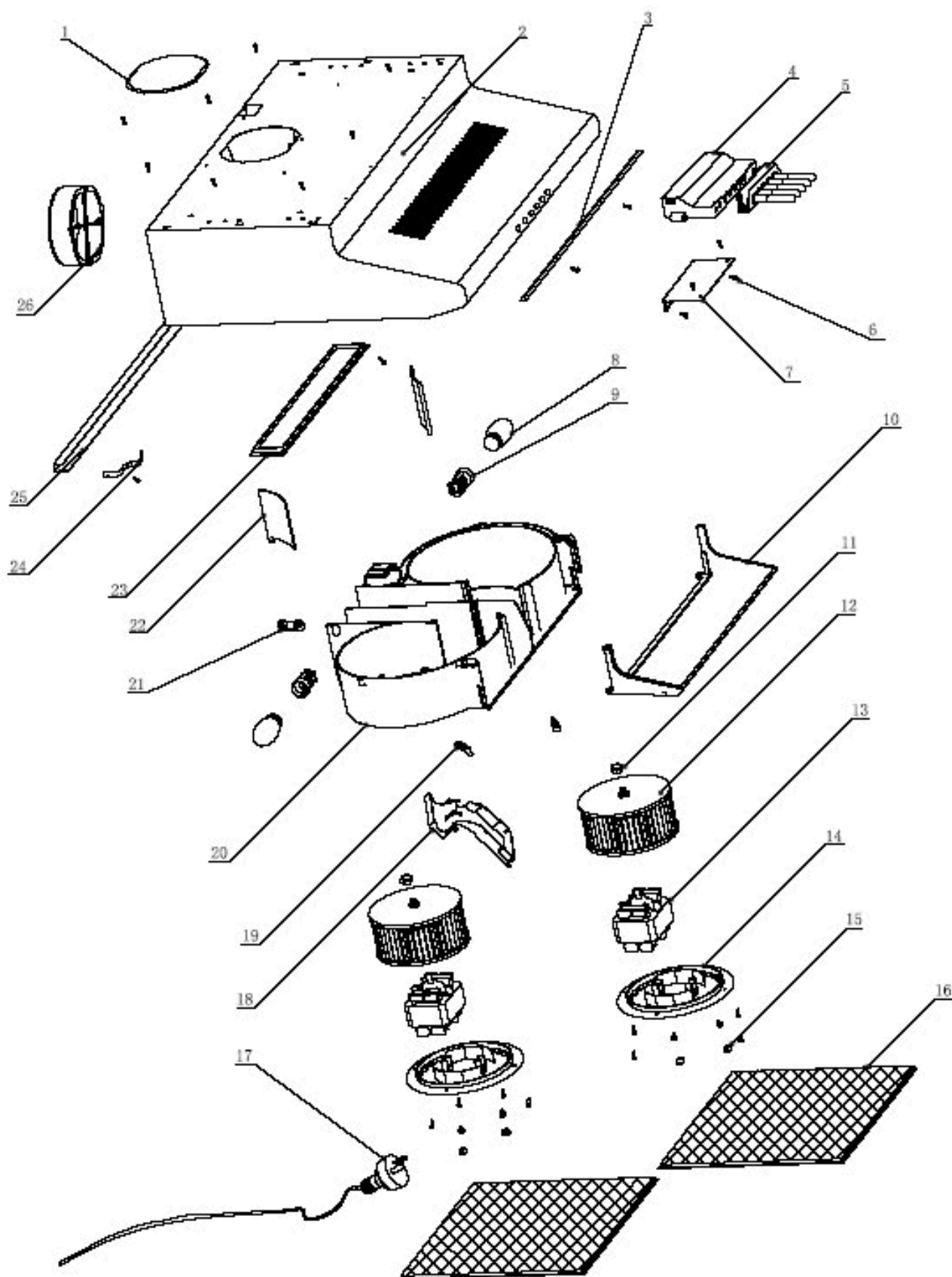




ITEM	PART N°	DESCRIPTION Ex. 5280	US	UW
1	<b>E910004</b>	Filter 285 x 315 x 10mm	3	3
2	<b>E600A0211</b>	Screw Cap (Included with Item 5)	2	2
3	<b>Refer Item 5</b>	Screw (Included with Item 5)	-	-
4	<b>Refer Item 5</b>	Motor Bracket (Included with Item 5)	1	1
5	<b>E610060</b>	Motor L/H Turbo Fan Nut & Brkt Assy 600mm Motor Wires (Includes Item 2, 3, 4, 24 & 25)	1	1
6	<b>0212002083</b>	Lamp Holder	2	2
7	<b>0060002083K</b>	Kit Lamp 40W Candle 240V	2	2
8	<b>E600A0203</b>	Select Lever	1	1
9	<b>N.P.A.</b>	Chamber	1	1
10	<b>E610010</b>	Fan Flap	1	1
11	<b>0120 009 312</b>	Spring Filter Clip	3	3
12	<b>N.P.A.</b>	Metal Casing	1	1
13	<b>N.P.A.</b>	Front Filter Channel	1	1
14	<b>N.P.A.</b>	Switch Box Support	1	1
15	<b>Refer Item 16</b>	Switch Box Assy (Includes Item 16)	1	1
16	<b>E610031-34T</b>	Push Button Switch PCB & Box	1	1
17	<b>E600A0311</b>	Power Cord	1	1
18	<b>AR125RFA</b>	Kit-125mm Round Flue Adaptor	1	1
19	<b>N.P.A.</b>	Rear Filter Channel	1	1
20	<b>E610024</b>	Outlet Cover	1	1
21	<b>E610025</b>	Lens Diffuser 40W	1	1
22	<b>N.P.A.</b>	Cord Press Piece	1	1
23	<b>N.P.A.</b>	Lamp Cover	1	1
24	<b>Refer Item 5</b>	Nut (Included with Item 5)	1	1
25	<b>Refer Item 5</b>	Turbo Fan (Included with Item 5)	1	1
N.I.	<b>ARCFD</b>	Carbon Filter	X	X

MODELS: WRJ903UK  
WRJ903UW  
WRJ911US

EX. VIEW DRAWING 5281  
UNIVERSAL COOKER HOOD  
PUSH BUTTON - DUAL MOTOR

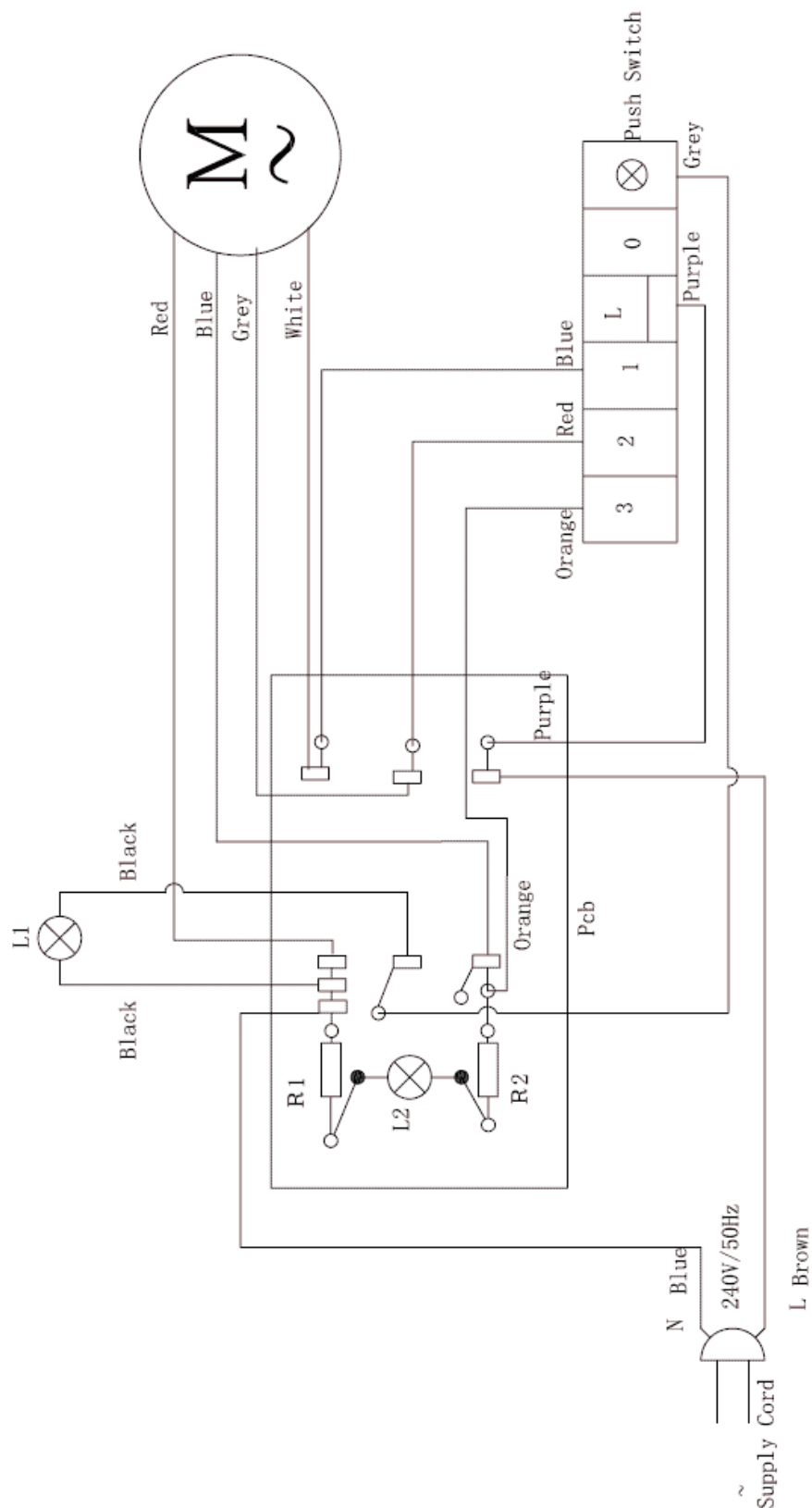


ITEM	PART N°	DESCRIPTION Ex. 5281	903 UK	903 UW	911 US
1	<b>E610024</b>	Outlet Cover	1	1	1
2	<b>N.P.A.</b>	Metal Casing – BLACK	1		
	<b>N.P.A.</b>	Metal Casing – WHITE		1	
	<b>N.P.A.</b>	Metal Casing – ST/ST			1
3	<b>N.P.A.</b>	Front Filter Support	1	1	1
4	<b>Refer Item 5</b>	Switch Box (Included with Item 5)	1	1	1
5	<b>E610031-34T</b>	Push Button Switch PCB & Box	1	1	1
6	<b>N.P.A.</b>	Screw	-	-	-
7	<b>N.P.A.</b>	Switch Box Support	1	1	1
8	<b>0060002083K</b>	Kit Lamp 40W Candle 240V	2	2	2
9	<b>0212002083</b>	Lamp Holder	2	2	2
10	<b>N.P.A.</b>	Chamber Cover Board	1	1	1
11	<b>Refer Item 13</b>	Nut (Included with Item 13)	-	-	-
12	<b>Refer Item 13</b>	Turbo Fan (Included with Item 13)	2	2	2
13	<b>E620002-6L</b>	Motor L/H Turbo Fan Nut & Brkt Assy 210mm Motor Wires (Includes Item 11, 12 & 14)	1	1	1
	<b>E620002-6R</b>	Motor R/H Turbo Fan Nut & Brkt Assy 210mm Motor Wires (Includes Item 11, 12 & 14)	1	1	1
14	<b>Refer Item 13</b>	Motor Bracket (Included with Item 13)	1	1	-
15	<b>E600A0211</b>	Screw Cap	4	4	4
16	<b>E910004</b>	Filter 285 x 315 x 10mm	3	3	3
17	<b>E610021</b>	Cord Service 1900mm	1	1	1
18	<b>N.P.A.</b>	Connection Box	1	1	1
19	<b>E600A0203</b>	Select Lever	2	2	2
20	<b>N.P.A.</b>	Chamber	1	1	1
21	<b>N.P.A.</b>	Cord Press Piece	1	1	1
22	<b>E600C02031</b>	Fan Flap (L/H)	1	1	1
	<b>E600C02032</b>	Fan Flap (R/H)	1	1	1
23	<b>E610025</b>	Lens Diffuser Universal 40W	1	1	1
24	<b>0120 009 312</b>	Spring Filter Clip	3	3	3
25	<b>N.P.A.</b>	Rear Filter Support	1	1	1
26	<b>AR125RFA</b>	Kit-125mm Round Flue Adaptor	1	1	1
N.I.	<b>ARCFD</b>	Carbon Filter	X	X	X

**MODELS:** WRJ600UK  
WRJ600US  
WRJ600UW

**WRJ900US  
WRJ900UW**

**EX. VIEW DRAWING 6348  
SINGLE MOTOR  
CIRCUIT DIAGRAM**



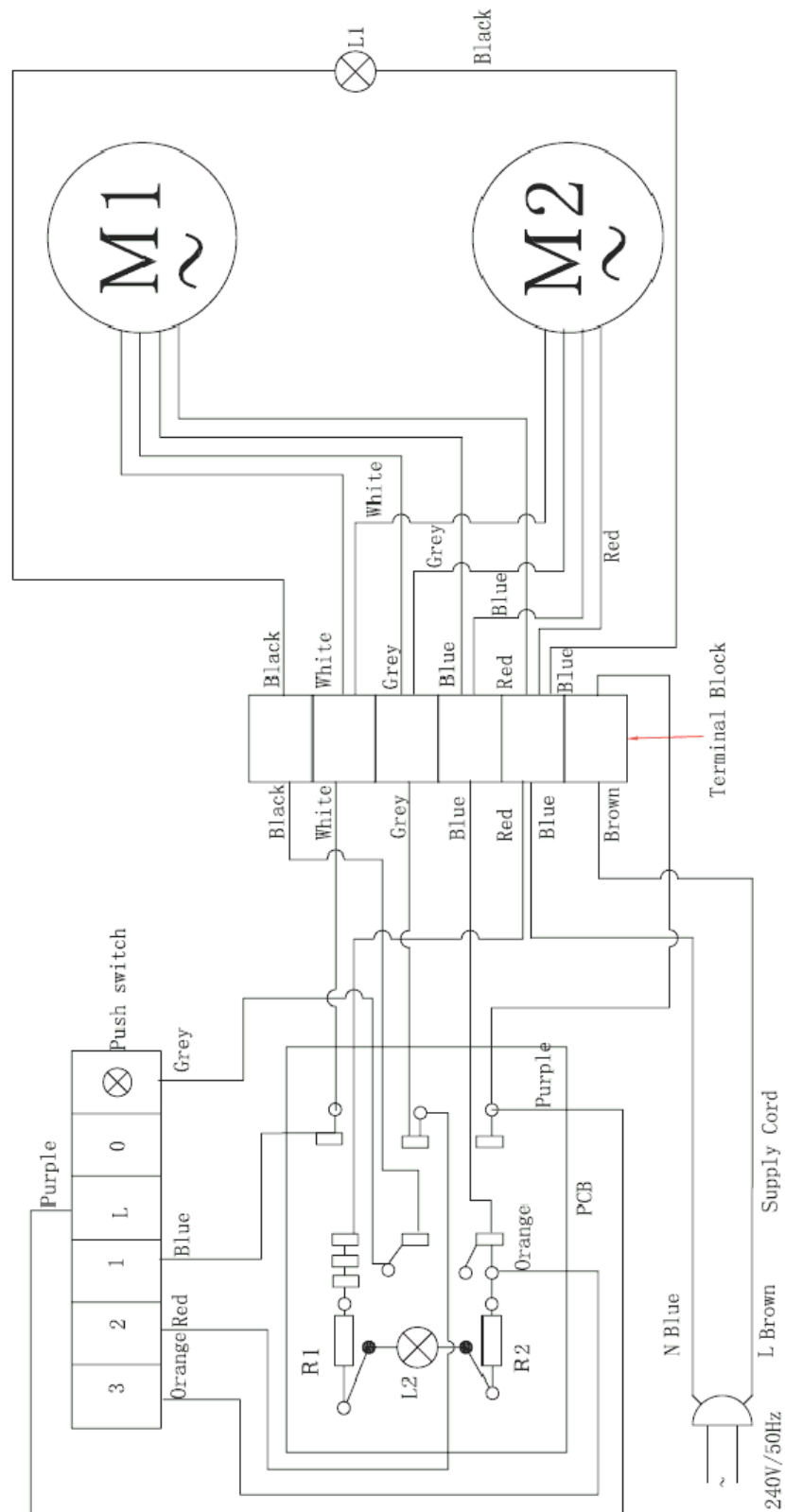
### IMPORTANT SAFETY NOTICE

This diagram has been prepared for use by electrically qualified service technicians. Electrolux cannot be held responsible for the interpretation of its service publications nor for any injury or damage that may occur in connection with their use.

MODELS: WRJ603UW  
WRJ611US

WRJ903UK  
WRJ903UW  
WRJ911US

EX. VIEW DRAWING 6349  
DUAL MOTOR  
CIRCUIT DIAGRAM



### IMPORTANT SAFETY NOTICE

This diagram has been prepared for use by electrically qualified service technicians. Electrolux cannot be held responsible for the interpretation of its service publications nor for any injury or damage that may occur in connection with their use.