



**ELECTROLUX HOME PRODUCTS PTY LTD**  
ABN 51 004 762 341

Technical Publication N° CG198.doc

Issue: 2  
Date: 3/12

**WEB SITE ADDRESS: [www.partnship.com.au](http://www.partnship.com.au)**

***WESTINGHOUSE***

***GAS COOKTOPS***

***MODELS:***

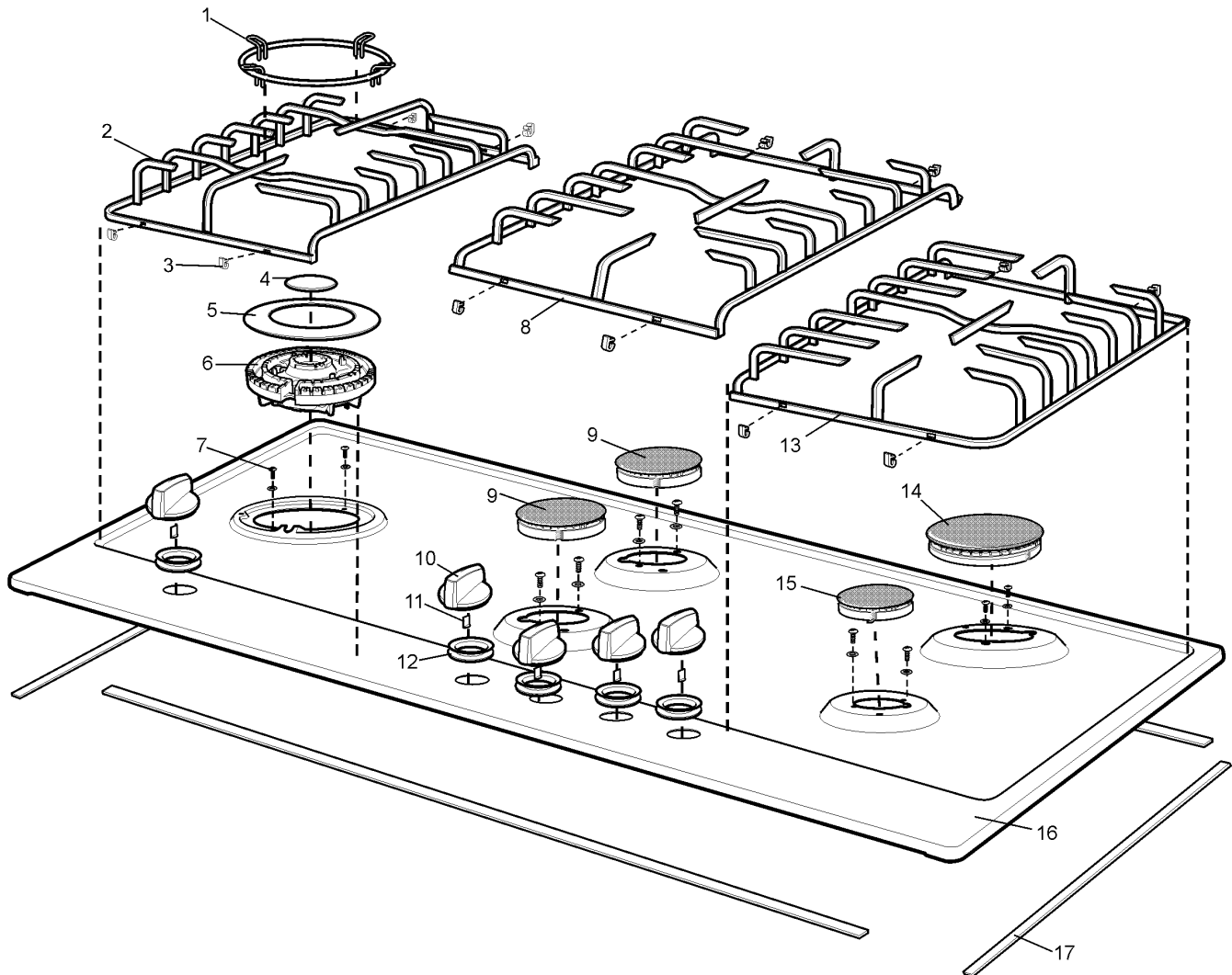
**GHR95S**  
**PNC 943253739**  
**GHR95W**  
**PNC 943253738**

<b>First Built Dates:</b>	
<b>GHR95S</b>	<b>5/11</b>
<b>GHR95W</b>	<b>5/11</b>

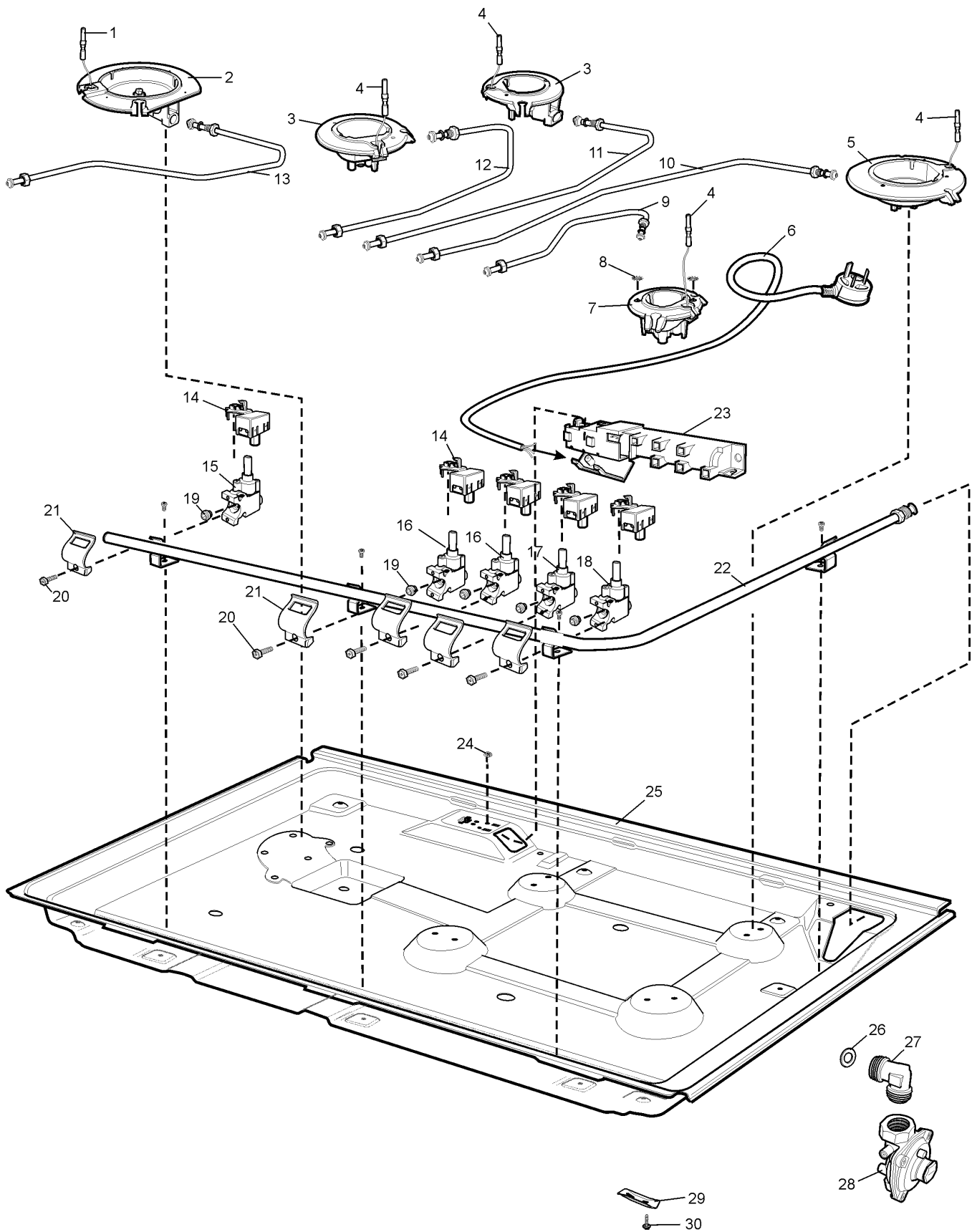
<b>CONTENTS</b>	<b>PAGE Nº</b>
FIRST BUILT DATES	2
CONTENTS	3
HOB ASSEMBLY	4 - 5
BURNER BOX ASSEMBLY	6 - 7
CONVERSION KIT	8 - 9
CIRCUIT DIAGRAM	10

**NOTE: In Parts Listings**

**N.I. = Not Illustrated**  
**N.P.A. = No Part Available**  
**N.P.N. = Not Used on this Model**



ITEM	PART N°	DESCRIPTION Ex 6641	S	W
1	<b>305 4301 00</b>	TRIVET WOK CROWN WIRE	1	1
2	<b>305 4302 00</b>	TRIVET WIRE L/H 90 W/HOUSE	1	1
3	<b>0523 001 031</b>	TRIVET FOOT (PT OF ITEM 2, 8 & 13)	12	12
4	<b>305 4316 00</b>	BURNER CAP MATT INNER WOK	1	1
5	<b>305 4317 00</b>	BURNER CAP MATT OUTER WOK	1	1
6	<b>357 7259 05</b>	TRIPLE CROWN WOK BNR CYL MACH	1	1
7	<b>354 3202 01</b>	SCREW 2.9 X 13 PAN T10 ZP PTFE	10	10
8	<b>305 4303 00</b>	TRIVET WIRE CENTRE 90 W/HOUSE	1	1
9	<b>305 3818 00</b>	BURNER CROWN/CAP S/R MATT CYL	2	2
10	<b>305 5524 02</b>	KNOB S/S WESTINGHOUSE GAS (INC ITEM 11)	5	
	<b>305 5524 01</b>	KNOB WHITE WESTINGHOUSE GAS (INC ITEM 11)		5
11	<b>N.P.A.</b>	CLIP KNOB SPRING (PT OF ITEM 10)	5	5
12	<b>355 6112 01</b>	GROMMET HOB - NFR	5	5
13	<b>305 4304 00</b>	TRIVET WIRE R/H 90 W/HOUSE	1	1
14	<b>305 3819 00</b>	BURNER CROWN/CAP RAP MATT CYL	1	1
15	<b>305 3817 00</b>	BURNER CROWN/CAP AUX MATT CYL	1	1
16	<b>305 4379 01</b>	HOB S/STEEL W/H 90 SCREEN STD	1	
	<b>305 4379 03</b>	HOB WHITE W/H 90 SCREEN STD		1
17	<b>356 5189 05</b>	SEAL MASTIC - 700MM (X 4 PER PACK)	1	1



ITEM	PART N°	DESCRIPTION Ex 6643	QTY
1	<b>357 0406 08</b>	PLUG SPARK WOK 500MM ENAMELLED	1
2	<b>0004 008 445</b>	BURNER BODY ASSY WOK IGN NG	1
3	<b>357 7298 48</b>	BURNER BODY ASSY S/RAP IGN NG	2
4	<b>357 0448 17</b>	PLUG SPARK 400 MM ENAMELLED	4
5	<b>357 7298 42</b>	BURNER BODY ASSY RAPID IGN NG	1
6	<b>305 4292 00</b>	CABLE - ELECT SUPPLY IGNITE	1
7	<b>305 4501 00</b>	BURNER BODY ASSY AUX IGN NG	1
8	<b>354 3212 09</b>	WASHER S/P EXTERNAL 4.3 X 8 ZP	2
9	<b>305 4360 00</b>	TUBE BURNER 90 IGNITE STD RF	1
10	<b>305 4359 00</b>	TUBE BURNER 90 IGNITE STD RR	1
11	<b>305 4358 00</b>	TUBE BURNER 90 IGNITE STD LR	1
12	<b>305 4357 00</b>	TUBE BURNER 90 IGNITE STD LF	1
13	<b>305 4361 00</b>	TUBE BURNER 90 IGNITE STD WOK	1
14	<b>305 4427 00</b>	SWITCH HARNESS 5P BSI IGNITE	1
15	<b>305 4485 03</b>	VALVE GAS C/T BSI WOK STD BLK	1
16	<b>305 4485 01</b>	VALVE GAS C/T BSI S/RAP STD BL	2
17	<b>305 4485 02</b>	VALVE GAS C/T BSI RAP STD RED	1
18	<b>305 4485 00</b>	VALVE GAS C/T SDON M13 SML GRN	1
19	<b>0208 003 419</b>	SEAL VALVE SOURDILLON	5
21	<b>305 4290 00</b>	CLAMP GAS VALVE BSI STD	5
21	<b>0750 003 026</b>	SCREW M4 X 16 HEX ZC	5
22	<b>305 4279 00</b>	RAIL GAS IGNITE 90	1
23	<b>357 2093 01</b>	IGN & TERM BOX 6P - 240V ISPRA	1
24	<b>354 3201 05</b>	SCREW M4 X 6 HEX T20 ZP	1
25	<b>305 4289 00</b>	BOX BURNER 90 IGNITE	1
26	<b>0115 009 011</b>	WASHER SEALING	1
27	<b>305 4584 00</b>	ELBOW GAS INLET 1/2" MALE/MALE	1
28	<b>0294 001 032</b>	REGULATOR GAS NG INTEG TEST PT	1
29	<b>353 0284 01</b>	CLAMP BURNER BOX IGNITE	4
30	<b>46667</b>	SCREW #8 X 3/4" PAN Z/P	4
N.I.	<b>305 3386 02</b>	TERMINAL BOX	1
N.I.	<b>0125 008 356</b>	CLIP SPARK PLUG E/LUX	5
N.I.	<b>305 4492 00</b>	KIT ASSY CLAMPS & INLET ING 90 (INC ITEMS 26, 27, 29 & 30)	1

## Gas Conversion – Important

**NOTE:** THIS KIT MUST BE FITTED BY A LICENSED GAS FITTER.  
A CERTIFICATE OF COMPLIANCE MUST BE SUPPLIED TO BE KEPT BY THE CUSTOMER.

Please follow the procedure below if a conversion to LPG or NG is required.

1. Remove the hotplate burners to access the hotplate injectors.
2. Replace the injectors with the appropriate injectors. (see table below).
3. Unscrew the hex nut from the regulator. The hex nut, brass washer and nylon insert will disengage from the regulator as an assembly.
4. Unclip the nylon insert from the nut assembly by rotating the insert 1/4 turn and pulling it free. (Figure 2)
5. Correctly orientate the insert and clip back into position. (Figure 3)
6. Refit the hex nut assembly to the regulator ensuring that it is fully screwed down.
7. Turn on the gas supply and at each new connection, check for leaks using soapy water.

8. The operation of the regulator can be confirmed by connecting a manometer to the pressure test point located on the side of the regulator body. (Fig 1) With the appliance operating check the outlet pressure. (see table below)

- When all burners of the appliance are operating at maximum,
- When the smallest burner of the appliance is operating at minimum.

9. One by one, turn the knobs to minimum and adjust the bypass screw (accessible when the knob is removed) until a small stable flame results. Turn the knob to maximum and then back to minimum to ensure that the correct minimum flame is maintained.

10. Attach the correct sticker to the cooker, near the gas supply inlet. (Remove or cover the old sticker)

Burner Type	Natural Gas (Nominal test point pressure: 1.00kPa)	LPG (Nominal test point pressure: 2.60kPa)
Small	1.00	0.55
Medium	1.35	0.70
Fish	1.45	0.78
Large	1.60	0.90
Wok	1.75	1.00

Fig 1

Hex nut assembly fully screwed down.

Pressure Test Point.

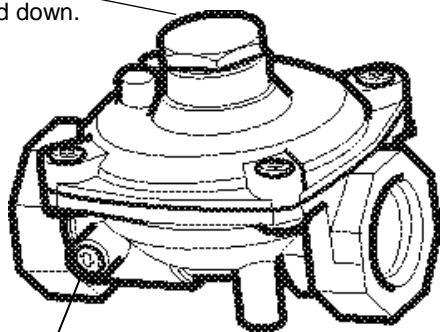


Fig 2

Hex nut assembly removed from regulator and insert disassembled.

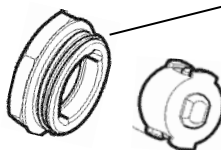
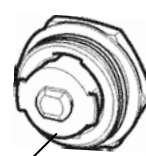
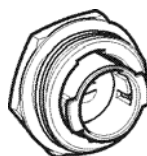


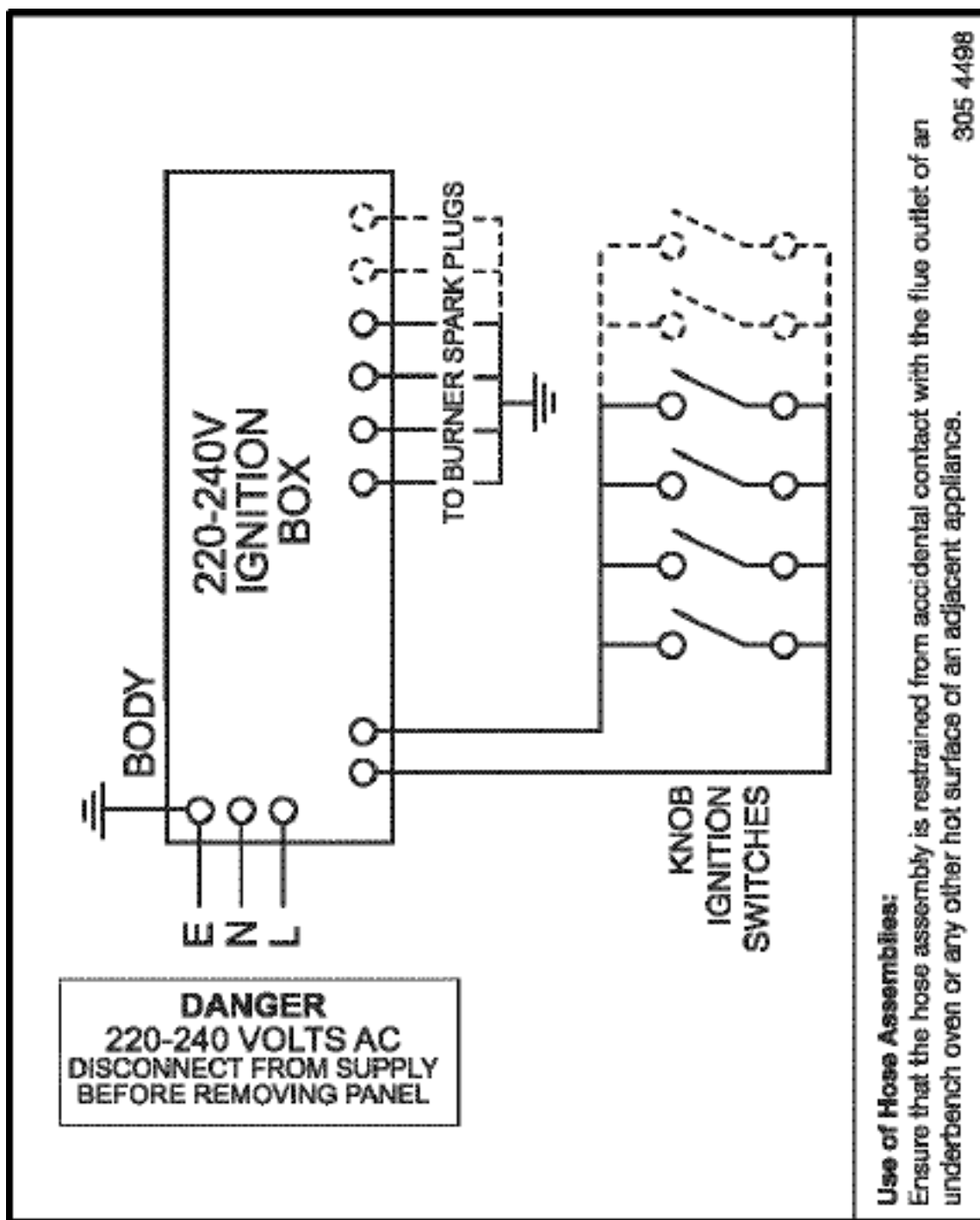
Fig 3

Insert orientated for natural gas operation.

Insert orientated for LPG operation.



<b>Kit Part N° ES6013</b>		
<b>PT N°</b>	<b>DESCRIPTION</b>	<b>QTY</b>
<b>0131 002 100</b>	NIPPLE INJECTOR LP/NG 1.0 MM	1
<b>0131 002 135</b>	NIPPLE INJECTOR SEMI R NG 1.35 MM	2
<b>0131 002 406</b>	NIPPLE INJECTOR FISH NG 1.45 MM	1
<b>0131 002 393</b>	NIPPLE INJECTOR RAPID NG 1.60 MM	2
<b>0131 002 403</b>	NIPPLE INJECTOR WOK NG 1.75 MM	1
<b>0131 001 148</b>	NIPPLE INJECTOR AUX LP 0.55 MM	1
<b>0131 001 149</b>	NIPPLE INJECTOR SEMI R LP 0.70 MM	2
<b>0131 001 186</b>	NIPPLE INJECTOR RAPID LP 0.90 MM	2
<b>0294 001 032</b>	REGULATOR GAS NG INTEG TEST PT	1
<b>0296 004 103</b>	STICKER GAS TYPE LPG	1
<b>0296 004 100</b>	STICKER GAS TYPE NG	1
<b>ES6012</b>	INSTRUCTION SHEET	1

**WARNING**

IT IS ILLEGAL FOR PERSONS OTHER THAN LICENSED ELECTRICAL MECHANICS OR PERSONS AUTHORISED BY LEGISLATION TO WORK ON THE FIXED WIRING OF ANY ELECTRICAL INSTALLATION. PENALTIES FOR CONVICTION ARE SEVERE.

**IMPORTANT SAFETY NOTICE**

This diagram has been prepared for use by electrically qualified service technicians. Electrolux cannot be held responsible for the interpretation of its service publications nor for any injury or damage that may occur in connection with their use.